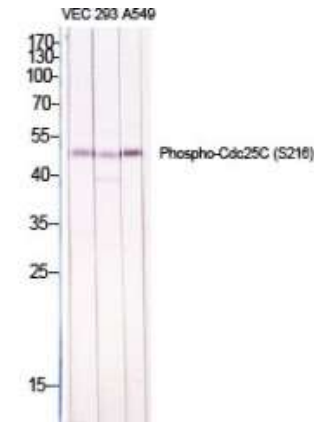


## Phospho-Cdc25C (Ser216) Antibody

<b>CATALOG NO:</b>	A1259-100 100 µl
<b>ALTERNATE NAMES:</b>	M-phase inducer phosphatase 3, Dual specificity phosphatase Cdc25C, CDC25C
<b>AMOUNT:</b>	100 µl
<b>IMMUNOGEN:</b>	Synthesized peptide derived from human Cdc25C around the phosphorylation site of S216. AA: 160-240
<b>MOL. WEIGHT</b>	53 kDa
<b>HOST/ISOTYPE:</b>	Rabbit IgG
<b>SPECIES REACTIVITY:</b>	Human
<b>SPECIFICITY:</b>	Phospho-Cdc25C (S216) Polyclonal Antibody detects endogenous levels of Cdc25C protein only when phosphorylated at S216.
<b>PURIFICATION:</b>	The antibody was affinity-purified from rabbit serum by affinity-chromatography using specific immunogen.
<b>FORM:</b>	Liquid
<b>FORMULATION:</b>	PBS containing 50% glycerol, 0.5% BSA and 0.02% sodium azide
<b>STORAGE CONDITIONS:</b>	Store at -20°C. Avoid repeated freeze/thaw cycles.
<b>DESCRIPTION:</b>	Functions as a dosage-dependent inducer in mitotic control. Tyrosine protein phosphatase required for progression of the cell cycle. When phosphorylated, highly effective in activating G2 cells into prophase. Directly dephosphorylates CDK1 and activates its kinase activity.
<b>APPLICATION:</b>	WB 1:500-1:2000 IHC 1:100-1:300 ELISA 1:10000
	<b>Note: This information is only intended as a guide. The optimal dilutions must be determined by the user.</b>



**Western Blot analysis using Phospho-Cdc25C (Ser216) Polyclonal Antibody in VEC, 293 and A549 cells**

### RELATED PRODUCTS:

- Phospho Alpha-synuclein (Tyr125) Antibody (**Cat. No. A1219-100**)
- Phospho (Ser31) Tyrosine Hydroxylase Antibody (**Cat. No. 3613-200**)
- Phospho (Ser19) Tyrosine Hydroxylase Antibody (**Cat. No. 3612-100**)
- Phospho (Tyr1472) NMDA NR2B Antibody (**Cat. No. 3616-100**)
- Phospho CREB (Ser129) Antibody (**Cat. No. A1222-100**)
- Phospho GAP43 (Ser41) Antibody (**Cat. No. A1220-100**)
- Phospho-Akt2 (Ser474) Antibody (**Cat. No. A1246-100**)
- Phospho-Akt1 (Ser246) Antibody (**Cat. No. A1245-100**)
- Phospho-MNK1 (Thr250) Antibody (**Cat. No. A1159-50**)
- Phospho-NIFK (Thr234) Antibody (**Cat. No. A1157-50**)

**FOR RESEARCH USE ONLY! Not to be used on humans.**