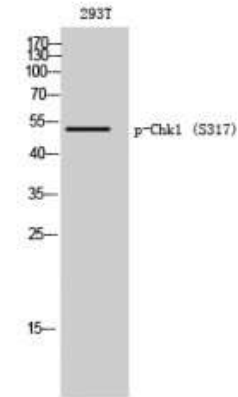


Phospho-Chk1 (Ser317) Antibody

| | |
|----------------------------|--|
| CATALOG NO: | A1263-100 100 µl |
| ALTERNATE NAMES: | Serine/threonine-protein kinase Chk1, CHK1 checkpoint homolog, Cell cycle checkpoint kinase, Checkpoint kinase-1, CHEK1, CHK1 |
| AMOUNT: | 100 µl |
| IMMUNOGEN: | Synthesized peptide derived from human Chk1 around the phosphorylation site of S317. AA: 270-350 |
| MOL. WEIGHT | 54 kDa |
| HOST/ISOTYPE: | Rabbit IgG |
| SPECIES REACTIVITY: | Human, Mouse, Rat |
| SPECIFICITY: | Phospho-Chk1 (S280) Polyclonal Antibody detects endogenous levels of Chk1 protein only when phosphorylated at S317. |
| PURIFICATION: | The antibody was affinity-purified from rabbit serum by affinity-chromatography using specific immunogen. |
| FORM: | Liquid |
| FORMULATION: | PBS containing 50% glycerol, 0.5% BSA and 0.02% sodium azide |
| STORAGE CONDITIONS: | Store at -20°C. Avoid repeated freeze/thaw cycles. |
| DESCRIPTION: | Serine/threonine-protein kinase which is required for checkpoint-mediated cell cycle arrest and activation of DNA repair in response to the presence of DNA damage or unreplicated DNA. May also negatively regulate cell cycle progression during unperturbed cell cycles. This regulation is achieved by a number of mechanisms that together help to preserve the integrity of the genome. Recognizes the substrate consensus sequence [R-X-X-S/T]. Binds to and phosphorylates CDC25A, CDC25B and CDC25C. Phosphorylation of CDC25A at 'Ser-178' and 'Thr-507' and phosphorylation of CDC25C at 'Ser-216' creates binding sites for 14-3-3 proteins which inhibit CDC25A and CDC25C. |
| APPLICATION: | WB 1:500-1:2000 ELISA 1:5000 IHC 1:100-1:300 |

Note: This information is only intended as a guide. The optimal dilutions must be determined by the user.



Western Blot analysis of 293T cells using Phospho-Chk1 (S317) Polyclonal Antibody

RELATED PRODUCTS:

- Phospho Alpha-synuclein (Tyr125) Antibody (**Cat. No. A1219-100**)
- Phospho (Ser31) Tyrosine Hydroxylase Antibody (**Cat. No. 3613-200**)
- Phospho (Ser19) Tyrosine Hydroxylase Antibody (**Cat. No. 3612-100**)
- Phospho (Tyr1472) NMDA NR2B Antibody (**Cat. No. 3616-100**)
- Phospho CREB (Ser129) Antibody (**Cat. No. A1222-100**)
- Phospho GAP43 (Ser41) Antibody (**Cat. No. A1220-100**)
- Phospho-Akt2 (Ser474) Antibody (**Cat. No. A1246-100**)
- Phospho-Akt1 (Ser246) Antibody (**Cat. No. A1245-100**)
- Phospho-MNK1 (Thr250) Antibody (**Cat. No. A1159-50**)
- Phospho-NIFK (Thr234) Antibody (**Cat. No. A1157-50**)

FOR RESEARCH USE ONLY! Not to be used on humans.