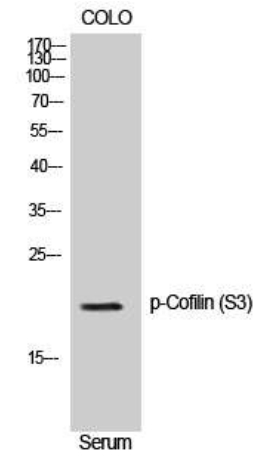


## Phospho-Cofilin (Ser3) Antibody

<b>CATALOG NO:</b>	A1267-100 100 µl
<b>ALTERNATE NAMES:</b>	Cofilin-1, 18 kDa phosphoprotein, p18, Cofilin, non-muscle isoform, CFL1, CFL
<b>AMOUNT:</b>	100 µl
<b>IMMUNOGEN:</b>	Synthesized peptide derived from human Cofilin around the phosphorylation site of S3. AA: 10-90
<b>MOL. WEIGHT</b>	19 kDa
<b>HOST/ISOTYPE:</b>	Rabbit IgG
<b>SPECIES REACTIVITY:</b>	Human, Mouse, Rat
<b>SPECIFICITY:</b>	Phospho-Cofilin (S3) Polyclonal Antibody detects endogenous levels of Cofilin protein only when phosphorylated at S3.
<b>PURIFICATION:</b>	The antibody was affinity-purified from rabbit serum by affinity-chromatography using specific immunogen.
<b>FORM:</b>	Liquid
<b>FORMULATION:</b>	PBS containing 50% glycerol, 0.5% BSA and 0.02% sodium azide
<b>STORAGE CONDITIONS:</b>	Store at -20°C. Avoid repeated freeze/thaw cycles.
<b>DESCRIPTION:</b>	Binds to F-actin and exhibits pH-sensitive F-actin depolymerizing activity. Regulates actin cytoskeleton dynamics. Important for normal progress through mitosis and normal cytokinesis. Plays a role in the regulation of cell morphology and cytoskeletal organization. Required for the up-regulation of atypical chemokine receptor ACKR2 from endosomal compartment to cell membrane, increasing its efficiency in chemokine uptake and degradation. Required for neural tube morphogenesis and neural crest cell migration.
<b>APPLICATION:</b>	WB 1:500-1:2000 IHC 1:100-1:300 ELISA 1:10000

**Note:** This information is only intended as a guide. The optimal dilutions must be determined by the user.



**Western Blot analysis of COLO205 cells using Phospho-Cofilin (S3) Polyclonal Antibody.**

### RELATED PRODUCTS:

- Phospho Alpha-synuclein (Tyr125) Antibody (Cat. No. A1219-100)
- Phospho (Ser31) Tyrosine Hydroxylase Antibody (Cat. No. 3613-200)
- Phospho (Ser19) Tyrosine Hydroxylase Antibody (Cat. No. 3612-100)
- Phospho (Tyr1472) NMDA NR2B Antibody (Cat. No. 3616-100)
- Phospho CREB (Ser129) Antibody (Cat. No. A1222-100)
- Phospho GAP43 (Ser41) Antibody (Cat. No. A1220-100)
- Phospho-Akt2 (Ser474) Antibody (Cat. No. A1246-100)
- Phospho-Akt1 (Ser246) Antibody (Cat. No. A1245-100)
- Phospho-MNK1 (Thr250) Antibody (Cat. No. A1159-50)
- Phospho-NIFK (Thr234) Antibody (Cat. No. A1157-50)

**FOR RESEARCH USE ONLY! Not to be used on humans.**