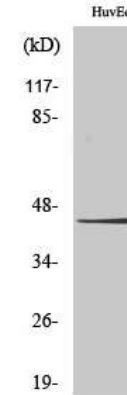


Phospho-Connexin 43 (Ser368) Antibody

CATALOG NO:	A1268-100 100 µl
ALTERNATE NAMES:	Gap junction alpha-1 protein, Connexin-43, Cx43, Gap junction 43 kDa heart protein, GJA1, GJAL
AMOUNT:	100 µl
IMMUNOGEN:	Synthesized peptide derived from human Connexin 43 around the phosphorylation site of S368 (30-380aa)
MOL. WEIGHT	43 kDa
HOST/ISOTYPE:	Rabbit IgG
SPECIES REACTIVITY:	Human, Mouse, Rat
SPECIFICITY:	Phospho-Connexin 43 (S368) Polyclonal Antibody detects endogenous levels of Connexin 43 protein only when phosphorylated at S368.
PURIFICATION:	The antibody was affinity-purified from rabbit antiserum by affinity-chromatography using epitope-specific immunogen
FORM:	Liquid
FORMULATION:	Liquid in PBS containing 50% glycerol, 0.5% BSA and 0.02% sodium azide
STORAGE CONDITIONS:	Store at -20°C. Avoid repeated freeze/thaw cycles.
DESCRIPTION:	Gap junction protein that acts as a regulator of bladder capacity. A gap junction consists of a cluster of closely packed pairs of transmembrane channels, the connexons, through which materials of low MW diffuse from one cell to a neighboring cell. May play a critical role in the physiology of hearing by participating in the recycling of potassium to the cochlear endolymph. Negative regulator of bladder functional capacity: acts by enhancing intercellular electrical and chemical transmission, thus sensitizing bladder muscles to cholinergic neural stimuli and causing them to contract. May play a role in cell growth inhibition through the regulation of NOV expression and localization. Plays an essential role in gap junction communication in the ventricles.
APPLICATION:	WB 1:500-1:2000; IHC 1:100-1:300; ELISA 1:20000

Note: This information is only intended as a guide. The optimal dilutions must be determined by the user.



Western Blot analysis of HuvEc cells using Phospho-Connexin 43 (S368) Polyclonal Antibody

RELATED PRODUCTS:

- Phospho Alpha-synuclein (Tyr125) Antibody (Cat. No. A1219-100)
- Phospho (Ser31) Tyrosine Hydroxylase Antibody (Cat. No. 3613-200)
- Phospho (Ser19) Tyrosine Hydroxylase Antibody (Cat. No. 3612-100)
- Phospho (Tyr1472) NMDA NR2B Antibody (Cat. No. 3616-100)
- Phospho CREB (Ser129) Antibody (Cat. No. A1222-100)
- Phospho GAP43 (Ser41) Antibody (Cat. No. A1220-100)
- Phospho-Akt2 (Ser474) Antibody (Cat. No. A1246-100)
- Phospho-Akt1 (Ser246) Antibody (Cat. No. A1245-100)
- Phospho-MNK1 (Thr250) Antibody (Cat. No. A1159-50)
- Phospho-NIFK (Thr234) Antibody (Cat. No. A1157-50)

FOR RESEARCH USE ONLY! Not to be used on humans.