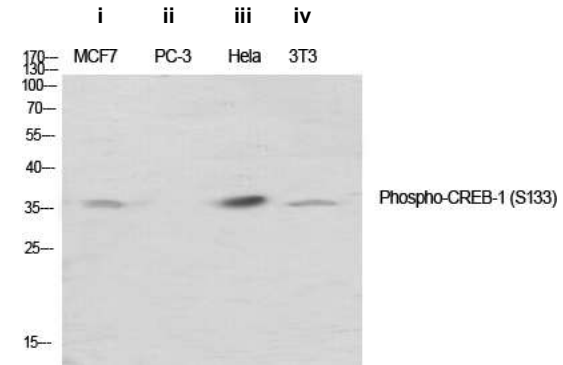


Phospho-CREB-1 (Ser133) Antibody

CATALOG NO:	A1269-100 100 µl
ALTERNATE NAMES:	Cyclic AMP-responsive element-binding protein 1, CREB-1, cAMP-responsive element-binding protein 1, CREB1
AMOUNT:	100 µl
IMMUNOGEN:	Synthesized peptide derived from human CREB-1 around the phosphorylation site of S133 (70-150aa)
MOL. WEIGHT	37 kDa
HOST/ISOTYPE:	Rabbit IgG
SPECIES REACTIVITY:	Human, Mouse, Rat
SPECIFICITY:	Phospho-CREB-1 (S133) Polyclonal Antibody detects endogenous levels of CREB-1 protein only when phosphorylated at S133.
PURIFICATION:	The antibody was affinity-purified from rabbit serum by affinity-chromatography using specific immunogen.
FORM:	Liquid
FORMULATION:	PBS containing 50% glycerol, 0.5% BSA and 0.02% sodium azide
STORAGE CONDITIONS:	Store at -20°C. Avoid repeated freeze/thaw cycles.
DESCRIPTION:	Phosphorylation-dependent transcription factor that stimulates transcription upon binding to the DNA cAMP response element (CRE), a sequence present in many viral and cellular promoters. Transcription activation is enhanced by the TORC coactivators which act independently of Ser-133 phosphorylation. Involved in different cellular processes including the synchronization of circadian rhythmicity and the differentiation of adipose cells
APPLICATION:	WB 1:500-1:2000 IHC 1:100-1:300 IP 1:200-1:500 ELISA 1:10000

Note: This information is only intended as a guide. The optimal dilutions must be determined by the user.



Western Blot analysis using Phospho-CREB-1 (S133) Polyclonal Antibody in:

- (i) MCF-7 cells
- (ii) PC3 cells
- (iii) HeLa cells
- (iv) 3T3 cells

RELATED PRODUCTS:

- Phospho Alpha-synuclein (Tyr125) Antibody (Cat. No. A1219-100)
- Phospho (Ser31) Tyrosine Hydroxylase Antibody (Cat. No. 3613-200)
- Phospho (Ser19) Tyrosine Hydroxylase Antibody (Cat. No. 3612-100)
- Phospho (Tyr1472) NMDA NR2B Antibody (Cat. No. 3616-100)
- Phospho CREB (Ser129) Antibody (Cat. No. A1222-100)
- Phospho GAP43 (Ser41) Antibody (Cat. No. A1220-100)
- Phospho-Akt2 (Ser474) Antibody (Cat. No. A1246-100)
- Phospho-Akt1 (Ser246) Antibody (Cat. No. A1245-100)
- Phospho-MNK1 (Thr250) Antibody (Cat. No. A1159-50)
- Phospho-NIFK (Thr234) Antibody (Cat. No. A1157-50)

FOR RESEARCH USE ONLY! Not to be used on humans.