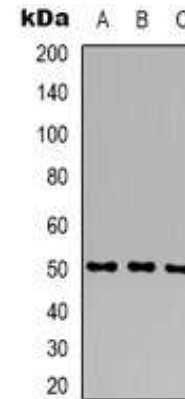


Anti-GPT2/ALT2 Antibody

CATALOG NO:	A1270-100
ALTERNATIVE NAMES:	AAT2, ALT2, Alanine aminotransferase 2, ALT2, Glutamate pyruvate transaminase 2, GPT 2, Glutamic-alanine transaminase 2, Glutamic--pyruvic transaminase 2
AMOUNT:	100 µl
IMMUNOGEN:	KLH-conjugated synthetic peptide encompassing a sequence within the center region of human GPT2
HOST/ISOTYPE:	Rabbit IgG
CLONALITY:	Polyclonal
SPECIFICITY:	Recognizes endogenous levels of GPT2 protein
SPECIES REACTIVITY:	Human
PURIFICATION:	The antibody was purified by affinity chromatography
FORM:	Liquid
FORMULATION:	Supplied in PBS; pH 7.3; 0.2% BSA; and 0.02% sodium azide
STORAGE CONDITIONS:	Shipped at 4°C. For long term storage store at -20°C in small aliquots to prevent freeze-thaw cycles
DESCRIPTION:	Alanine aminotransferase 2 catalyzes the reversible transamination between alanine and 2-oxoglutarate to form pyruvate and glutamate.
APPLICATION:	WB; 1:500 – 1:1000

Note: This information is only intended as a guide. The optimal dilutions must be determined by the user.



Western blot analysis of ALT2 expression in SHSY5Y (A); HepG2 (B); HEK293T (C) whole cell lysates

RELATED PRODUCTS:

- GPT2/ALT2, human recombinant (**Cat. No. 7806-50**)
- GPT/ALT1, human recombinant (**Cat. No. 7805-50**)
- Alanine Aminotransferase (ALT or SGPT) Activity Assay Kit (**Cat. No. K752-100**)
- Alanine Colorimetric/Fluorometric Assay Kit (**Cat. No. K652-100**)

FOR RESEARCH USE ONLY! Not to be used on humans.