

Anti-GPT/ALT1 Antibody

| | |
|----------------------------|--|
| CATALOG NO: | A1271-100 |
| ALTERNATIVE NAMES: | Alanine aminotransferase 1, ALT1, Glutamate pyruvate transaminase 1, GPT 1, Glutamic--alanine transaminase 1, Glutamic--pyruvic transaminase 1, GPT, AAT1, GPT1 |
| AMOUNT: | 100 µl |
| IMMUNOGEN: | KLH conjugated synthetic peptide between 118-144 amino acids from the N-terminal region of human GPT |
| MOLECULAR WEIGHT: | 54.6 kDa |
| HOST/ISOTYPE: | Rabbit IgG |
| SPECIES REACTIVITY: | Human, Mouse, Rat |
| PURIFICATION: | Saturated Ammonium Sulfate (SAS) precipitation followed by dialysis against PBS. |
| FORM: | Liquid |
| FORMULATION: | Supplied in PBS with 0.09% (W/V) sodium azide |
| STORAGE CONDITIONS: | Maintain refrigerated at 2-8°C for up to 6 months. For long term storage store at -20°C in small aliquots to prevent freeze-thaw cycles. |
| DESCRIPTION: | GPT(Glutamate-pyruvate transaminase), also known as alanine aminotransferase, catalyzes the reversible conversion of L-alanine and alpha-ketoglutarate to L-glutamate and pyruvate. This protein has 2 distinct molecular and genetic forms: one cytoplasmic (soluble) (GPT1) and one mitochondrial (GPT2). See ALTQTL1 and ALTQTL2 for information on quantitative trait loci influencing the plasma level of alanine aminotransferase. |
| APPLICATION: | IHC: 1:100 WB: 1:1000 |

Note: This information is only intended as a guide. The optimal dilutions must be determined by the user.

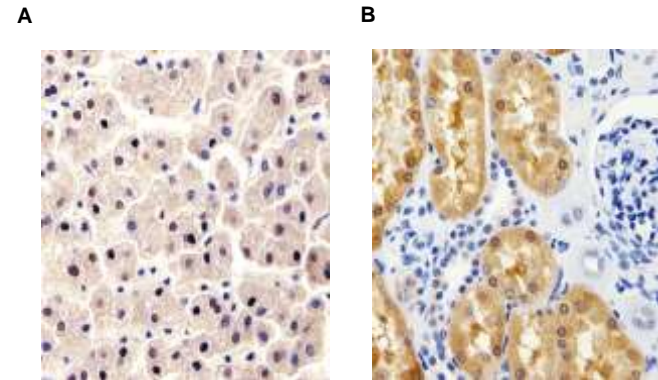


Fig. A. Immunohistochemical analysis of paraffin-embedded human liver section using Anti-GPT/ALT1 Antibody

Fig. B. Immunohistochemical analysis of paraffin-embedded human kidney section using Anti-GPT/ALT1 Antibody

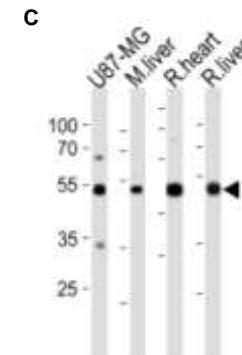


Fig. C. Western blot analysis of GPT1/ALT1 Antibody in U87-MG cell line, mouse liver and rat heart and liver tissue lysates (35ug/lane)

RELATED PRODUCTS

- GPT2/ALT2, human recombinant (**Cat. No. 7806-50**)
- GPT/ALT1, human recombinant (**Cat. No. 7805-50**)
- Alanine Aminotransferase (ALT or SGPT) Activity Assay Kit (**Cat. No. K752-100**)
- Alanine Colorimetric/Fluorometric Assay Kit (**Cat. No. K652-100**)

FOR RESEARCH USE ONLY! Not to be used on humans.