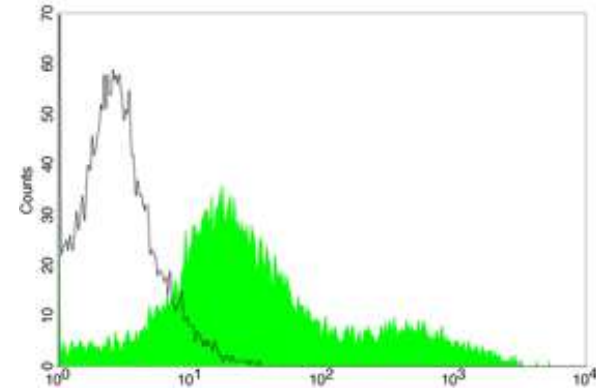


Anti-HA Tag (FITC) Antibody

CATALOG NO:	A1281-50
AMOUNT:	50 µg
IMMUNOGEN:	A synthetic peptide YPYDVPDYA coupled to KLH
CLONE:	5E11D8
HOST/ISOTYPE:	Mouse IgG1 κ
PURIFICATION:	Protein A purification
FORM:	Liquid
FORMULATION:	PBS, pH 7.4, 1% BSA and 0.02% sodium azide
SPECIFICITY:	This antibody recognizes C-terminal, N-terminal, and internal HA tagged fusion proteins
STORAGE CONDITIONS:	Store at 2-8°C for 2-3 weeks. For long term storage, aliquot and store at -20°C or below. Avoid repeated freezing and thawing cycles.
DESCRIPTION:	Epitope tags are useful for the labeling and detection of proteins using immunoblotting, immunoprecipitation, and immunostaining techniques. The HA tag is derived from an epitope of the influenza hemagglutinin protein, which has been extensively used as a general epitope tag in expression vectors.
APPLICATION:	IF: 0.5-2 µg/ml FC: 0.5-2 µg for 1 x 10 ⁶ cells
	Note: This information is only intended as a guide. The optimal dilutions must be determined by the user.



Flow cytometric analysis of transfected HEK-293 cell expressing HA-tagged protein using Anti-HA-tag (FITC) Monoclonal Antibody (shaded histogram) or with a negative control antibody (open histogram)

RELATED PRODUCTS

- HA-Tag Antibody (Clone 12CA5[2]) (Cat. No. 3996-100)
- His-Tag Antibody (Clone 11E12) (Cat. No. 6714-100)
- His-Tag Antibody (Clone BV-G020) (Cat. No. 3646-100)
- His-Tag Monoclonal Antibody (Cat. No. A1032-100)

FOR RESEARCH USE ONLY! Not to be used on humans.