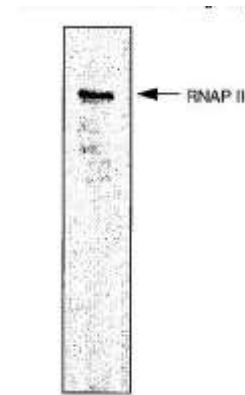


## Anti-RNA polymerase II Antibody (CTD 4H8)

<b>CATALOG NO:</b>	A1289-100
<b>AMOUNT:</b>	100 µl
<b>IMMUNOGEN:</b>	10 repeats of synthetic peptide YSPTSPS using chemically synthesized phospho-Ser5
<b>HOST/ISOTYPE:</b>	Mouse IgG1
<b>CLONE:</b>	CTD 4H8
<b>SPECIES REACTIVITY:</b>	Human, Yeast, Mouse
<b>SPECIFICITY:</b>	Specific for C-terminal repeat of large subunit of RNA polymerase II. This antibody detects both unphosphorylated and phosphorylated forms of the protein.
<b>FORM:</b>	Liquid
<b>STORAGE CONDITIONS:</b>	For long term storage store at -20°C in small aliquots to prevent freeze-thaw cycles
<b>DESCRIPTION:</b>	RNAPII is an essential component of the RNAP II transcription elongation complex. Recruitment of RNA processing factors to the elongation complex is coordinated by the phosphorylation of Serine-2 and Serine-5 residues within the C-terminal repeat (YSPTSPS) domain of the largest subunit of RNAPII. Mutations that directly affect transcription by RNA polymerases rank among the most central mediators of malignant transformation.
<b>APPLICATION:</b>	ChIP, ELISA, FACS, IHC, IF, IP, ChIP-seq WB: 1:1000

**Note:** This information is only intended as a guide. The optimal dilutions must be determined by the user.



Western Blot detection of HeLa cell line using Anti-RNA polIII antibody

### RELATED PRODUCTS

- SRA Antibody (Cat. No. 3780)
- NONO Antibody (Cat. No. 3751)
- Caper Antibody (Cat. No. 3733)
- Dicer Antibody (Cat. No. 3697)

**FOR RESEARCH USE ONLY! Not to be used on humans.**