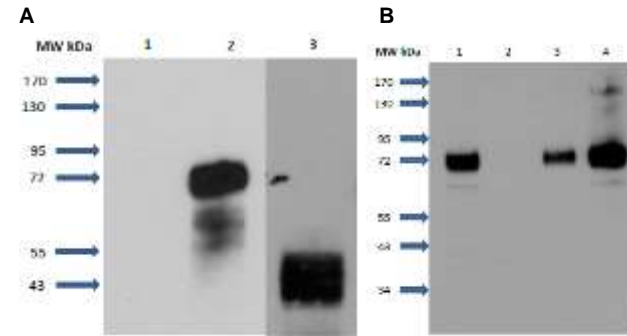


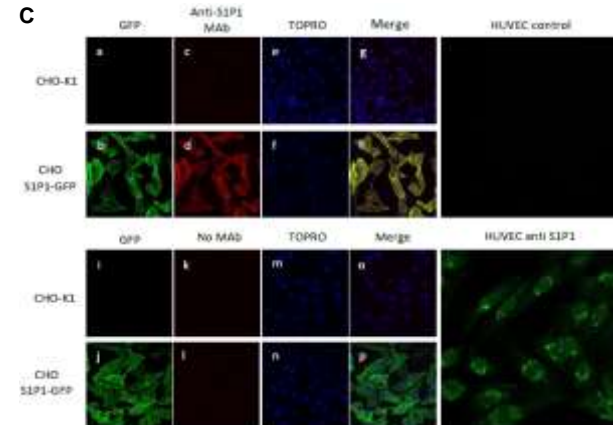
## Anti-S1P1 Antibody

<b>CATALOG NO:</b>	A1296-50
<b>ALTERNATIVE NAMES:</b>	S1P Receptor 1, S1PR1, Sphingosine 1-Phosphate Receptor 1, Endothelial differentiation GProtein Coupled Receptor 1, EDG-1.
<b>AMOUNT:</b>	50 µg
<b>IMMUNOGEN:</b>	Modified 5-hydroxymethylcytosine found in DNA vertebrates
<b>HOST/ISOTYPE:</b>	Mouse IgG2a
<b>CLONALITY:</b>	Monoclonal
<b>CLONE:</b>	2B9
<b>SPECIFICITY:</b>	5-hmC
<b>SPECIES REACTIVITY:</b>	Human
<b>PURIFICATION:</b>	Purified IgG fraction prepared by affinity chromatography on protein A
<b>FORM:</b>	Liquid
<b>FORMULATION:</b>	Phosphate Buffer 10mM - NaCl 0.15M - pH 7.4
<b>STORAGE CONDITIONS:</b>	For long term storage store at -20°C in small aliquots to prevent freeze-thaw cycles
<b>DESCRIPTION:</b>	Sphingosine 1-Phosphate Receptor 1 (S1P1) is a multi-pass cell membrane protein that belongs to the Gprotein coupled receptor superfamily (GPCR). S1P1 is a receptor for the lysosphingolipid sphingosine 1- phosphate (S1P). S1P is a bioactive lysophospholipid that elicits diverse physiological effect on most types of cells and tissues. This inducible epithelial cell G-protein-coupled receptor may be involved in the processes that regulate the differentiation of endothelial cells. Clinical significance of S1P1 encompasses various diseases including cancer and multiple sclerosis. S1P1 seems to be coupled to the G(i/o) subclass of heteromeric G proteins.
<b>APPLICATION:</b>	ELISA: 1:4000 to 1:10000, IP: 1-300, IF: 1:500, WB; 1:5000, FACS; 1:100
	<b>Note: This information is only intended as a guide. The optimal dilutions must be determined by the user.</b>



**Fig1. Detection of S1P1 receptors in transfected cells and human umbilical vein endothelial cells (HUVEC)**

**Fig.2 Immunoprecipitation of S1P1 receptors**



**Fig3. Immunofluorescence detection of S1P1 receptors in transfected cells and HUVEC**

### RELATED PRODUCTS:

- Anti-5-Methylcytosine Antibody (Cat. No. A1294-50)
- Anti-5-Hydroxymethylcytosine Antibody (Cat. No. A1295-50)
- GPT/ALT1, human recombinant (Cat. No. 7805-50)
- Alanine Aminotransferase (ALT or SGPT) Activity Assay Kit (Cat. No. K752-100)
- Alanine Colorimetric/Fluorometric Assay Kit (Cat. No. K652-100)

**FOR RESEARCH USE ONLY! Not to be used on humans.**