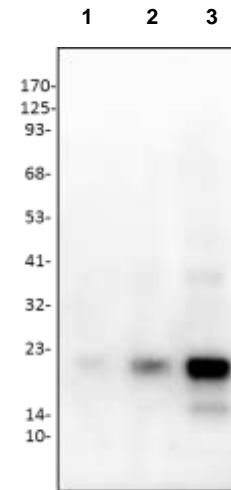


Anti-PLGF-2 Antibody

CATALOG NO:	A1303-30T 30 µg (Trial size) A1303-100 100 µg
ALTERNATIVE NAMES:	Placenta growth factor, PIGF, PGF, PGFL, PLGF
CONCENTRATION:	0.5 mg/ml
IMMUNOGEN:	Recombinant human PLGF-2
INTERNAL ID:	BV-Q58
HOST/ISOTYPE:	Rabbit IgG
PURIFICATION:	Affinity purified rabbit IgG
FORM:	Liquid
SPECIES REACTIVITY:	Human
FORMULATION:	In PBS pH 7.2, containing 30% glycerol, 0.5% BSA, 5 mM EDTA and 0.03% proclin
STORAGE CONDITIONS:	Store at -20°C. Avoid repeated freeze/thaw cycles.
DESCRIPTION:	Growth factor active in angiogenesis and endothelial cell growth, stimulating their proliferation and migration. It binds to the receptor FLT1/VEGFR-1. Isoform PIGF-2 binds NRP1/neuropilin-1 and NRP2/neuropilin-2 in a heparin-dependent manner. Also promotes cell tumor growth.
APPLICATION:	Western blot: 1-4 µg
	Note: This information is only intended as a guide. The optimal dilutions must be determined by the user.



Western blot of human PLGF-2 antibody:

Lane 1: human PLGF-2 10 ng
Lane 2: human PLGF-2 50 ng
Lane 3: human PLGF-2 200 ng

RELATED PRODUCTS:

- PLGF-2, human recombinant (**Cat. No. 4741**)
- Human CellExp™ PLGF/PIGF2/PGF, human recombinant (**Cat. No. 7238**)

FOR RESEARCH USE ONLY! Not to be used on humans.