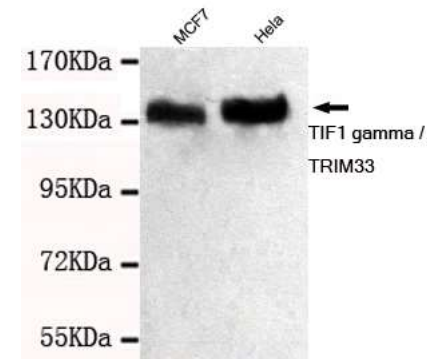


Anti-TIF1gamma Antibody (3H7-C8-B9)

CATALOG NO:	A1313-100
ALTERNATIVE NAMES:	ECTO, PTC7, RFG7, TF1G, TIF1G, TIF gamma, TIF1gamma
CLONALITY:	Monoclonal
CLONE:	3H7-C8-B9
AMOUNT:	100 µg
Host/ISOTYPE:	Mouse IgG2a
IMMUNOGEN:	Recombinant human TIF1 gamma / TRIM33 protein fragments expressed in <i>E.coli</i> .
MOLECULAR WEIGHT:	140 kDa
SPECIES REACTIVITY:	Human
SPECIFICITY:	This antibody detects endogenous levels of TIF1 gamma / TRIM33 and does not cross-react with related proteins.
PURIFICATION:	Affinity purified
FORM:	Liquid
FORMULATION:	Purified mouse monoclonal in buffer containing 0.1M Tris-Glycine (pH 7.4, 150 mM NaCl) with 0.2% sodium azide, 50% glycerol
STORAGE CONDITIONS:	For long term storage store at -20°C in small aliquots to prevent freeze-thaw cycles
DESCRIPTION:	Acts as an E3 ubiquitin-protein ligase. Promotes SMAD4 ubiquitination, nuclear exclusion and degradation via the ubiquitin proteasome pathway. According to PubMed:16751102, does not promote a decrease in the level of endogenous SMAD4. May act as a transcriptional repressor. Inhibits the transcriptional response to TGF-beta/BMP signaling cascade. Plays a role in the control of cell proliferation. Its association with SMAD2 and SMAD3 stimulates erythroid differentiation of hematopoietic stem/progenitor (By similarity). Monoubiquitinates SMAD4 and acts as an inhibitor of SMAD4-dependent TGF-beta/BMP signaling cascade (Monoubiquitination of SMAD4 hampers its ability to form a stable complex with activated SMAD2/3 resulting in inhibition of TGF-beta/BMP signaling cascade)
APPLICATION:	WB; 1:1000

Note: This information is only intended as a guide. The optimal dilutions must be determined by the user.



Western blot detection of TIF1 gamma / TRIM33 in MCF7 and HeLa nuclear extract using TIF1 gamma Antibody

RELATED PRODUCTS:

- 5-hmC polyclonal antibody (rabbit) (Cat. No. 6830)
- Acetyl Lysine (Biotin) Antibody (6125)
- Acetyl-Histone H2A Antibody (3653)
- Anti- c-Myb Antibody (A1212)

FOR RESEARCH USE ONLY! Not to be used on humans.