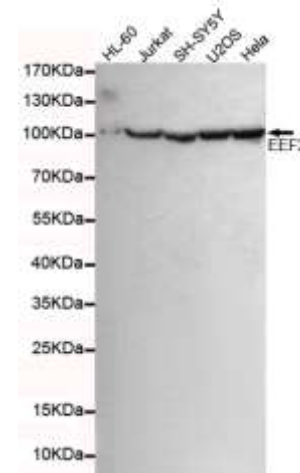


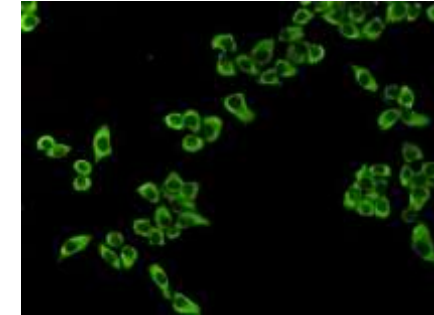
Anti-EEF2 Antibody (4B3-G7-H5)

CATALOG NO:	A1314-100
ALTERNATIVE NAMES:	EEF2, Eef2, EF-2, EF2, EF2_HUMAN, Elongation factor 2, Eukaryotic translation elongation factor 2, Polypeptidyl tRNA translocase, SCA26
CLONALITY:	Monoclonal
CLONE:	4B3-G7-H5
AMOUNT:	100 µg
Host/ISOTYPE:	Mouse IgG2b
IMMUNOGEN:	Recombinant human EEF2 protein fragments expressed in <i>E.coli</i>
MOLECULAR WEIGHT:	130 kDa
SPECIES REACTIVITY:	Human
SPECIFICITY:	This antibody detects endogenous levels of EEF2 and does not cross-react with related proteins.
PURIFICATION:	Affinity purified
FORM:	Liquid
FORMULATION:	Purified mouse monoclonal in buffer containing 0.1M Tris-Glycine (pH 7.4, 150 mM NaCl) with 0.2% sodium azide, 50% glycerol
STORAGE CONDITIONS:	For long term storage store at -20°C in small aliquots to prevent freeze-thaw cycles
DESCRIPTION:	Catalyzes the GTP-dependent ribosomal translocation step during translation elongation. During this step, the ribosome changes from the pre-translocational (PRE) to the post-translocational (POST) state as the newly formed A-site-bound peptidyl-tRNA and P-site-bound deacylated tRNA move to the P and E sites, respectively. Catalyzes the coordinated movement of the two tRNA molecules, the mRNA and conformational changes in the ribosome.
APPLICATION:	WB; 1:5000 IF; 1:200

Note: This information is only intended as a guide. The optimal dilutions must be determined by the user.



Western blot detection of eEF2 in HL-60, Jurkat, SHSY-5Y, U2OS and HeLa cell lysates using eEF2 Antibody



Immunocytochemical staining of HeLa cells using anti-eEF2 antibody at a dilution of 1:200. Cells were fixed with ice cold methanol.

RELATED PRODUCTS:

- 5-hmC polyclonal antibody (rabbit) (**Cat. No. 6830**)
- Acetyl Lysine (Biotin) Antibody (**6125**)
- Acetyl-Histone H2A Antibody (**3653**)
- Anti- c-Myb Antibody (**A1212**)

FOR RESEARCH USE ONLY! Not to be used on humans.