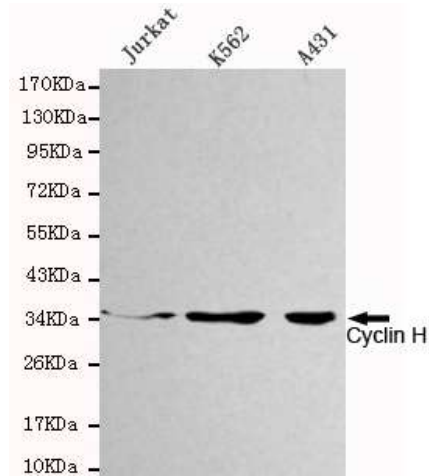


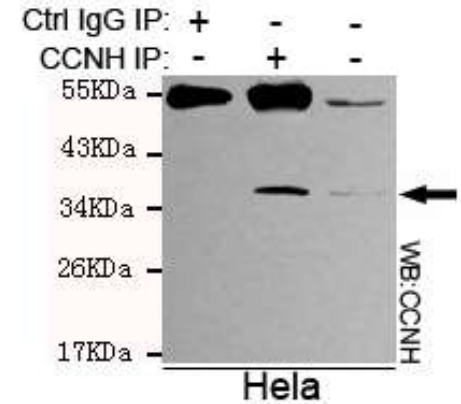
Anti-Cyclin H Antibody (1H9-D3-E11)

| | |
|----------------------------|--|
| CATALOG NO: | A1320-100 |
| AMOUNT: | 100 µg |
| ALTERNATIVE NAMES: | Cyclin-H, MO15-associated protein, p34, p37 |
| CLONALITY: | Monoclonal |
| CLONE: | 4E11-G2-D7 |
| Host/ISOTYPE: | Mouse IgG2b |
| IMMUNOGEN: | Recombinant human Cyclin H protein fragments expressed in <i>E.coli</i> |
| MOLECULAR WEIGHT: | 38 kDa |
| SPECIES REACTIVITY: | Human |
| SPECIFICITY: | This antibody detects endogenous levels of Cyclin H and does not cross-react with related proteins. |
| PURIFICATION: | Affinity purified |
| FORM: | Liquid |
| FORMULATION: | Purified mouse monoclonal in buffer containing 0.1M Tris-Glycine (pH 7.4, 150 mM NaCl) with 0.2% sodium azide, 50% glycerol |
| STORAGE CONDITIONS: | For long term storage store at -20°C in small aliquots to prevent freeze-thaw cycles |
| DESCRIPTION: | Regulates CDK7, the catalytic subunit of the CDK-activating kinase (CAK) enzymatic complex. CAK activates the cyclin-associated kinases CDK1, CDK2, CDK4 and CDK6 by threonine phosphorylation. CAK complexed to the core-TFIIH basal transcription factor activates RNA polymerase II by serine phosphorylation of the repetitive C-terminal domain (CTD) of its large subunit (POLR2A), allowing its escape from the promoter and elongation of the transcripts. Involved in cell cycle control and in RNA transcription by RNA polymerase II. Its expression and activity are constant throughout the cell cycle. |
| APPLICATION: | WB; 1:1000 IP |

Note: This information is only intended as a guide. The optimal dilutions must be determined by the user.



Western blot detection of Cyclin H in Jurkat, K562 and A431 cell lysates using Cyclin H Antibody



Immunoprecipitation analysis of HeLa cell lysates using Cyclin H Antibody

RELATED PRODUCTS:

- Phospho-Cdk1/2/3 (Thr14) Antibody (Cat. No. A1260)
- Phospho-Cdk2 (Thr160) Antibody (Cat. No. A1261)
- Acetyl-Histone H2A Antibody (Cat. No. 3653)
- Anti- c-Myb Antibody (Cat. No. A1212)

FOR RESEARCH USE ONLY! Not to be used on humans.