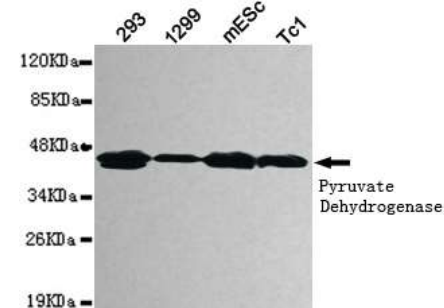


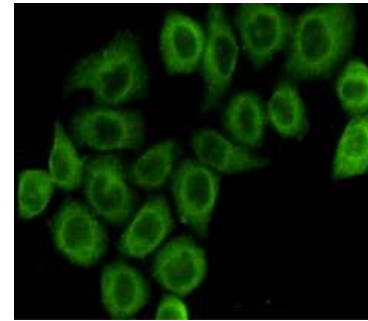
## Anti-Pyruvate Dehydrogenase E1- $\alpha$ subunit Antibody (3H2-F8-B5)

<b>CATALOG NO:</b>	A1323-100
<b>AMOUNT:</b>	100 $\mu$ g
<b>ALTERNATIVE NAMES:</b>	Pyruvate dehydrogenase E1 component subunit alpha, somatic form, mitochondrial, PDHE1-A type I, PDHA1, PHE1A
<b>CLONALITY:</b>	Monoclonal
<b>CLONE:</b>	3H2-F8-B5
<b>Host/ISOTYPE:</b>	Mouse IgG1
<b>IMMUNOGEN:</b>	Recombinant human Pyruvate Dehydrogenase protein fragments expressed in <i>E.coli</i>
<b>MOLECULAR WEIGHT:</b>	43 kDa
<b>SPECIES REACTIVITY:</b>	Human, Mouse
<b>SPECIFICITY:</b>	This antibody detects endogenous levels of pyruvate dehydrogenase (lipoamide) alpha 1 and does not cross-react with related proteins.
<b>PURIFICATION:</b>	Affinity purified
<b>FORM:</b>	Liquid
<b>FORMULATION:</b>	Purified mouse monoclonal in buffer containing 0.1M Tris-Glycine (pH 7.4, 150 mM NaCl) with 0.2% sodium azide, 50% glycerol
<b>STORAGE CONDITIONS:</b>	For long term storage store at -20°C in small aliquots to prevent freeze-thaw cycles
<b>DESCRIPTION:</b>	The pyruvate dehydrogenase complex catalyzes the overall conversion of pyruvate to acetyl-CoA and CO <sub>2</sub> , and thereby links the glycolytic pathway to the tricarboxylic cycle
<b>APPLICATION:</b>	WB; 1:1000 IF; 1:100

**Note:** This information is only intended as a guide. The optimal dilutions must be determined by the user.



Western blot detection of pyruvate dehydrogenase (lipoamide) alpha 1 in 293, 1299, mESC and Tc1 cell lysates using pyruvate dehydrogenase (lipoamide) alpha 1 Antibody



Immunocytochemistry staining of HeLa cells fixed with 4% Paraformaldehyde and using anti-pyruvate dehydrogenase (lipoamide) alpha 1 Antibody

### RELATED PRODUCTS:

- 5-hmC polyclonal antibody (rabbit) (Cat. No. 6830)
- Acetyl Lysine (Biotin) Antibody (Cat. No. 6125)
- Acetyl-Histone H2A Antibody (Cat. No. 3653)
- Anti- c-Myb Antibody (Cat. No. A1212)

**FOR RESEARCH USE ONLY! Not to be used on humans.**