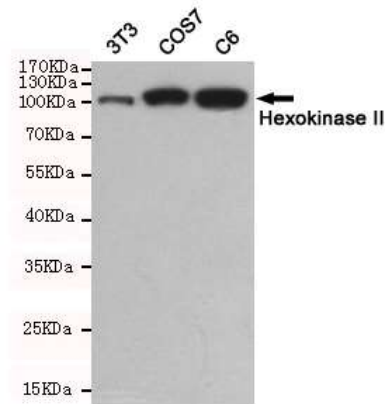


## Anti-Hexokinase II Antibody (1E8-H3-F11)

<b>CATALOG NO:</b>	A1327-100
<b>AMOUNT:</b>	100 µg
<b>ALTERNATIVE NAMES:</b>	Hexokinase-2, Hexokinase type II, HK II, Muscle form hexokinase, HK2
<b>CLONALITY:</b>	Monoclonal
<b>CLONE:</b>	1E8-H3-F11
<b>Host/ISOTYPE:</b>	Mouse IgG1
<b>IMMUNOGEN:</b>	Recombinant human Hexokinase II protein
<b>MOLECULAR WEIGHT:</b>	102 kDa
<b>SPECIES REACTIVITY:</b>	Rat, Mouse, Monkey
<b>SPECIFICITY:</b>	This antibody detects endogenous levels of Hexokinase II and does not cross-react with related proteins.
<b>PURIFICATION:</b>	Affinity purified
<b>FORM:</b>	Liquid
<b>FORMULATION:</b>	Purified mouse monoclonal in PBS (pH 7.4) containing with 0.03% Proclin 300 and 50% glycerol
<b>STORAGE CONDITIONS:</b>	For long term storage store at -20°C in small aliquots to prevent freeze-thaw cycles
<b>DESCRIPTION:</b>	Hexokinases phosphorylate glucose to produce glucose-6-phosphate, the first step in most glucose metabolism pathways. This gene encodes hexokinase 2, the predominant form found in skeletal muscle. It localizes to the outer membrane of mitochondria. Expression of this gene is insulin-responsive, and studies in rat suggest that it is involved in the increased rate of glycolysis seen in rapidly growing cancer cells.
<b>APPLICATION:</b>	WB; 1:500

**Note:** This information is only intended as a guide. The optimal dilutions must be determined by the user.



**Western blot detection of Hexokinase II in 3T3, COS7 and C6 cell lysates using Hexokinase II Antibody**

### RELATED PRODUCTS:

- Anti-Cathepsin H Antibody (Cat. No. A1250)
- Anti-IDH3 gamma Antibody (Cat. No. A1225)
- Anti-GPT/ALT1 Antibody (Cat. No. A1271)
- Anti-NAMPT Antibody (14A5) (Cat. No. A1301)

**FOR RESEARCH USE ONLY! Not to be used on humans.**