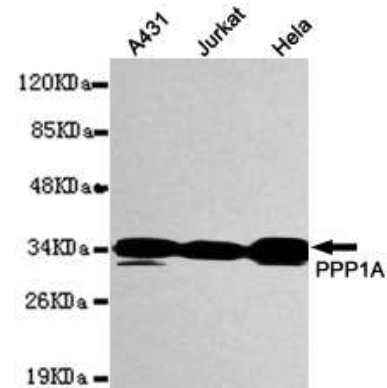


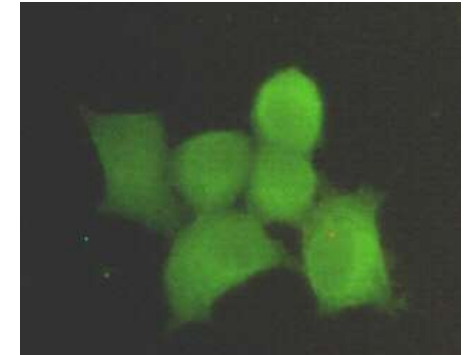
Anti-PPP1A Antibody (1C11-C10-H5-E9)

CATALOG NO:	A1328-100
AMOUNT:	100 µg
ALTERNATIVE NAMES:	Serine/threonine-protein phosphatase PP1-alpha catalytic subunit, PP-1A, PPP1CA, PPP1A
CLONALITY:	Monoclonal
CLONE:	1C11-C10-H5-E9
Host/ISOTYPE:	Mouse IgG1
IMMUNOGEN:	Recombinant human PPP1A protein fragments expressed in <i>E.coli</i>
MOLECULAR WEIGHT:	38 kDa
SPECIES REACTIVITY:	Human
SPECIFICITY:	This antibody detects endogenous levels of PPP1A and does not cross-react with related proteins.
PURIFICATION:	Affinity purified
FORM:	Liquid
FORMULATION:	Purified mouse monoclonal in buffer containing 0.1M Tris-Glycine (pH 7.4, 150 mM NaCl) with 0.2% sodium azide, 50% glycerol
STORAGE CONDITIONS:	For long term storage store at -20°C in small aliquots to prevent freeze-thaw cycles
DESCRIPTION:	Protein phosphatase that associates with over 200 regulatory proteins to form highly specific holoenzymes which dephosphorylate hundreds of biological targets. Protein phosphatase 1 (PP1) is essential for cell division, and participates in the regulation of glycogen metabolism, muscle contractility and protein synthesis. Involved in regulation of ionic conductances and long-term synaptic plasticity. May play an important role in dephosphorylating substrates such as the postsynaptic density-associated Ca ²⁺ /calmodulin dependent protein kinase II. Component of the PTW/PP1 phosphatase complex, which plays a role in the control of chromatin structure and cell cycle progression during the transition from mitosis into interphase.
APPLICATION:	WB; 1:1000 IF; 1:300 IHC; 1:500- 11000

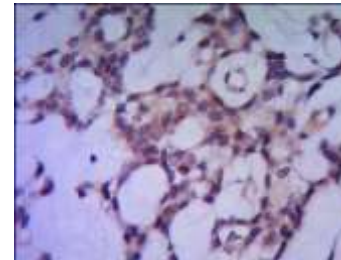
Note: This information is only intended as a guide. The optimal dilutions must be determined by the user.



Western blot detection of PPP1A in MCF7, K562, HeLa, HEPG2 and Jurkat whole cell lysates using PPP1A Antibody



Immunocytochemistry stain of HeLa using PPP1A Antibody



IHC of paraffin-embedded human breast cancer using anti-PPP1A Antibody diluted 1/500-1/1000.

RELATED PRODUCTS:

- Akt/PKB Antibody (Cat. No. 3247)
- ASK1/MAPKKK5 Antibody (Cat. No. 3128)
- FABP3, human recombinant (Cat. No. 4503)
- MAPKAPK-2 Antibody (Cat. No. 3100)

FOR RESEARCH USE ONLY! Not to be used on humans.