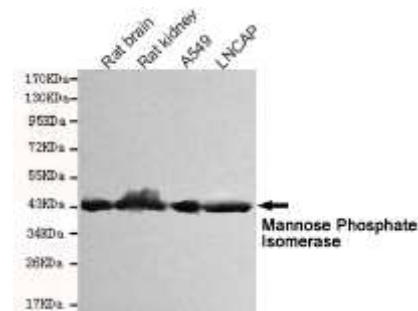


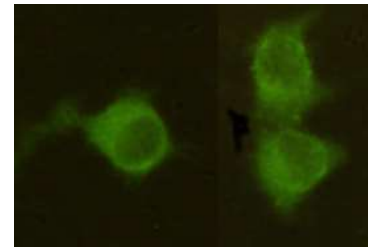
Anti-Mannose Phosphate Isomerase Antibody (4G9-B4-B8)

CATALOG NO:	A1329-100
AMOUNT:	100 µg
ALTERNATIVE NAMES:	Mannose-6-phosphate isomerase, Phosphohexomutase, Phosphomannose isomerase, PMI
CLONALITY:	Monoclonal
CLONE:	4G9-B4-B8
Host/ISOTYPE:	Mouse IgG1
IMMUNOGEN:	Recombinant human Mannose Phosphate Isomerase protein fragments expressed in <i>E.coli</i>
MOLECULAR WEIGHT:	54 kDa
SPECIES REACTIVITY:	Human, Rat
SPECIFICITY:	This antibody detects endogenous levels of Mannose Phosphate Isomerase and does not cross-react with related proteins.
PURIFICATION:	Affinity purified
FORM:	Liquid
FORMULATION:	Purified mouse monoclonal in buffer containing 0.1M Tris-Glycine (pH 7.4, 150 mM NaCl) with 0.2% sodium azide, 50% glycerol
STORAGE CONDITIONS:	For long term storage store at -20°C in small aliquots to prevent freeze-thaw cycles
DESCRIPTION:	Phosphomannose isomerase catalyzes the interconversion of fructose-6-phosphate and mannose-6-phosphate and plays a critical role in maintaining the supply of D-mannose derivatives, which are required for most glycosylation reactions. Mutations in the MPI gene were found in patients with carbohydrate-deficient glycoprotein syndrome, type Ib.
APPLICATION:	WB; 1:1000 IF; 1:300

Note: This information is only intended as a guide. The optimal dilutions must be determined by the user.



Western blot detection of Mannose Phosphate Isomerase in Rat brain, Rat kidney, A549 and LNCAP cell lysates using Mannose Phosphate Isomerase Antibody



Immunocytochemistry stain of HeLa using Mannose Phosphate Isomerase Antibody

RELATED PRODUCTS:

- Anti-Cathepsin H Antibody (Cat. No. A1250)
- Anti-IDH3 gamma Antibody (Cat. No. A1225)
- Anti-GPT/ALT1 Antibody (Cat. No. A1271)
- Anti-NAMPT Antibody (14A5) (Cat. No. A1301)

FOR RESEARCH USE ONLY! Not to be used on humans.