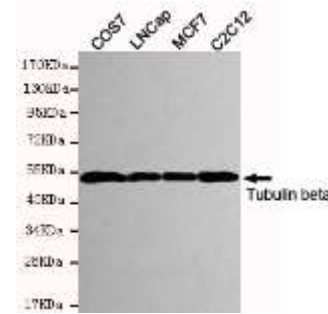


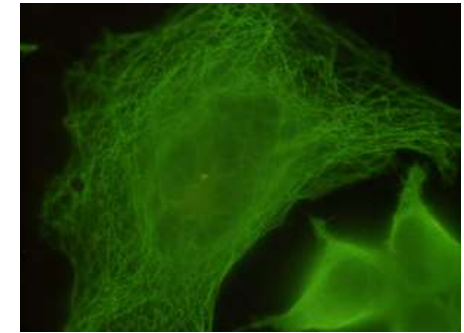
## Anti- $\beta$ -Tubulin Antibody (1E1-E8-H4)

<b>CATALOG NO:</b>	A1334-100
<b>AMOUNT:</b>	100 $\mu$ g
<b>ALTERNATIVE NAMES:</b>	Tubulin beta chain, Tubulin beta-5 chain, TUBB, TUBB5
<b>CLONALITY:</b>	Monoclonal
<b>CLONE:</b>	1E1-E8-H4
<b>Host/ISOTYPE:</b>	Mouse IgG1
<b>IMMUNOGEN:</b>	Recombinant human Tubulin beta protein fragments expressed in <i>E.coli</i>
<b>MOLECULAR WEIGHT:</b>	55 kDa
<b>SPECIES REACTIVITY:</b>	Human, Mouse, Rat, Monkey
<b>SPECIFICITY:</b>	This antibody detects endogenous levels of Tubulin beta and does not cross-react with related proteins.
<b>PURIFICATION:</b>	Affinity purified
<b>FORM:</b>	Liquid
<b>FORMULATION:</b>	Purified mouse monoclonal in PBS (pH 7.4) containing with 0.02% sodium azide, 0.1mg/ml BSA and 50% glycerol
<b>STORAGE CONDITIONS:</b>	For long term storage store at -20°C in small aliquots to prevent freeze-thaw cycles
<b>DESCRIPTION:</b>	Tubulin is the major constituent of microtubules. It binds two moles of GTP, one at an exchangeable site on the beta chain and one at a non-exchangeable site on the alpha-chain.
<b>APPLICATION:</b>	WB; 1:5000 IF; 1:500

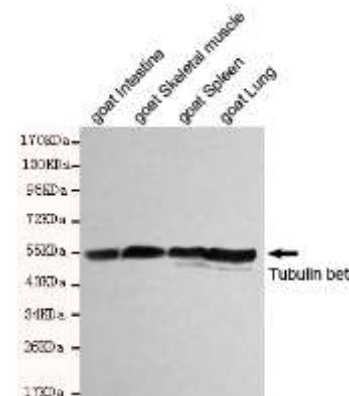
**Note:** This information is only intended as a guide. The optimal dilutions must be determined by the user.



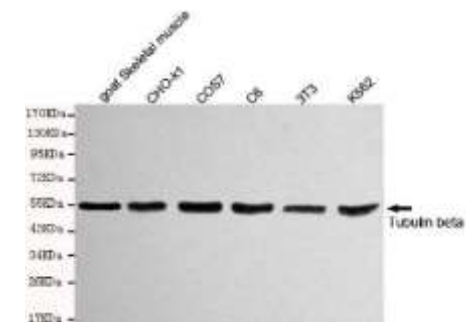
Western blot detection of Tubulin beta in COS7, LNCap, MCF7 and C2C12 cell lysates and using Tubulin beta Antibody



Immunocytochemistry staining of HeLa cells fixed with 4% paraformaldehyde and using anti-Tubulin beta Antibody



Western blot detection of Tubulin beta in goat intestine, goat skeletal muscle, goat spleen and goat lung cell lysates using Tubulin beta Antibody



Western blot detection of Tubulin beta in Goat skeletal muscle, CHO-k1, COS7, C6, 3T3 and K562 cell lysates using Tubulin beta Antibody

### RELATED PRODUCTS:

- Anti-Flag-Tag Antibody (4A8) (Cat. No. A1030)
- Anti-GST-Tag Antibody (4G4) (Cat. No. A1021)
- Anti-His-Tag Antibody (6E2) (Cat. No. A1032)
- Anti-V5 epitope tag, Human IgG1 Antibody (Cat. No. A1103)

FOR RESEARCH USE ONLY! Not to be used on humans