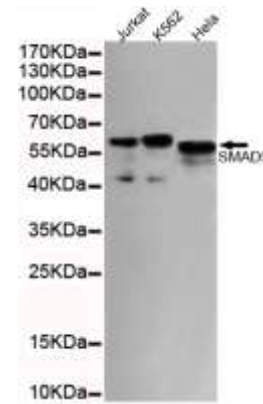


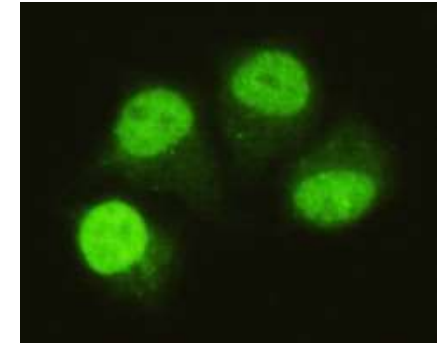
Anti-SMAD5 Antibody (4B10-B10-B6)

CATALOG NO:	A1339-100
AMOUNT:	100 µg
ALTERNATIVE NAMES:	Mothers against decapentaplegic homolog 5, MAD homolog 5, Mothers against DPP homolog 5, JV5-1, SMAD family member 5, SMAD 5, Smad5, hSmad5
CLONALITY:	Monoclonal
CLONE:	4B10-B10-B6
Host/ISOTYPE:	Mouse IgG1
IMMUNOGEN:	Recombinant human SMAD5 (C terminal) protein fragments expressed in <i>E.coli</i>
MOLECULAR WEIGHT:	60 kDa
SPECIES REACTIVITY:	Human
SPECIFICITY:	This antibody detects endogenous levels of SMAD5 and does not cross-react with related proteins.
PURIFICATION:	Affinity purified
FORM:	Liquid
FORMULATION:	Purified mouse monoclonal in buffer containing 0.1M Tris-Glycine (pH 7.4, 150 mM NaCl) with 0.2% sodium azide, 50% glycerol
STORAGE CONDITIONS:	For long term storage store at -20°C in small aliquots to prevent freeze-thaw cycles
DESCRIPTION:	Transcriptional modulator activated by BMP (bone morphogenetic proteins) type 1 receptor kinase. SMAD5 is a receptor-regulated SMAD (R-SMAD).
APPLICATION:	WB; 1:1000 IF; 1:75 FCM; 1:100

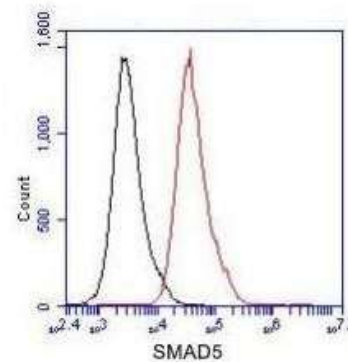
Note: This information is only intended as a guide. The optimal dilutions must be determined by the user.



Western blot detection of SMAD5 (C-terminus) in HeLa, Jurkat and K562 cell lysates using SMAD5 (C-terminus) Antibody



Immunocytochemistry of HeLa cells using anti-SMAD5 (C-terminus) Antibody



Flow Cytometry analysis of Jurkat cells stained with SMAD5 (red, 1/100 dilution), followed by FITC-conjugated goat anti-mouse IgG.

RELATED PRODUCTS:

- Smad1 Antibody (Cat. No. 3461)
- Smad4 Antibody (Cat. No. 3464)
- Smad5 Antibody (Cat. No. 3465)
- Smad7 Antibody (Cat. No. 3670)
- Anti-SMAD2/3 Antibody (Cat. No. A1214)

FOR RESEARCH USE ONLY! Not to be used on humans.