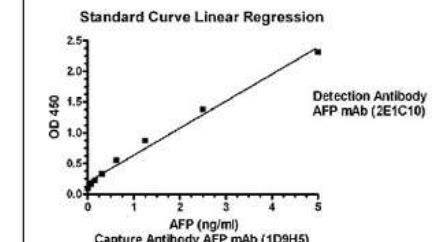
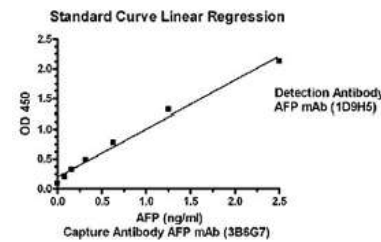


Anti-AFP Antibody (1D9H5)

CATALOG NO:	A1353-1000
AMOUNT:	1 mg
ALTRERNAME NAMES:	Alpha-1-fetoprotein, Alpha-fetoglobulin, HPAFP, AFP, Alpha-fetoprotein
IMMUNOGEN:	AFP protein purified from human hepatocellular carcinoma
CLONALITY:	Monoclonal
CLONE:	1D9H5
HOST/ISOTYPE:	Mouse IgG1, κ
PURIFICATION:	Protein A purification
FORM:	Liquid
CONCENTRATION:	0.5 mg/ml
FORMULATION:	In PBS buffer, pH 7.4, containing 0.02% sodium azide
STORAGE CONDITIONS:	For long term storage, aliquot and store at -20°C or below. Avoid repeated freezing and thawing cycles.
SENSITIVITY:	The limit of detection for antibody pairs is < 20 pg/ml.
SPECIFICITY:	AFP monoclonal antibodies (1D9H5, 2E1C10 and 3B6G7) recognize human AFP protein
DESCRIPTION:	<p>AFP (Alpha-Feto Protein) is a glycoprotein with molecular weight of approximately 70 kDa. It is a major protein in developing fetus and decreases to lower level after birth. In healthy adults, less than 20 ng/ml of AFP is found in the serum. Serum AFP elevates when hepatocellular carcinoma or testicular germ cell tumors occurs. Therefore, it is a useful marker in diagnosing hepatocellular carcinoma and germ cell tumors. In addition, for pregnant women, the AFP concentration is 10-150 ng/ml in the blood. High levels of AFP can indicate a neural tube defect of the fetus, such as spina bifida.</p> <p>AFP Antibody is produced from the hybridoma resulting from fusion of SP2/0-Ag14 myeloma and B-lymphocytes obtained from mouse immunized with AFP protein purified from human hepatocellular carcinoma</p>
APPLICATION:	<p>These antibodies are perfect choice for in vitro diagnostic assay development. They are prepared for non-clinical research use only. The recommended pairs are based on our laboratory results.</p> <p>ELISA Capture: 1-10 μg/ml, ELISA Detection: 0.05-0.2 μg/ml</p>

Detection	Capture		
	A1353 (1D9H5)	A1354 (2E1C10)	A1355 (3B6G7)
A1353 (1D9H5)		-	+
A1354 (2E1C10)	+		-
A1355 (3B6G7)	-	-	

The above Data was achieved by Sandwich ELISA. '+' means reaction and '-' means no reaction. The number of '+' represents reaction intensity.



Antibody pairs analysis of AFP monoclonal antibodies by Sandwich ELISA

General conditions for sandwich ELISA:

1. Microplate was incubated with a capture antibody against AFP and blocked with PBS containing 1% BSA, followed by 3 washing cycles.
2. Incubation with AFP protein followed by 3 washing cycles.
3. Incubation with Biotin labeled detection antibody against AFP, followed by 3 washing cycles
4. Incubation with Streptavidin-HRP, followed by 3 washing cycles.
5. Bound peroxidase activity was determined using Colorimetric detection.

RELATED PRODUCTS:

- Alpha-Fetoprotein (AFP) ELISA (Cat. No. K4242)

FOR RESEARCH USE ONLY! Not to be used on humans.