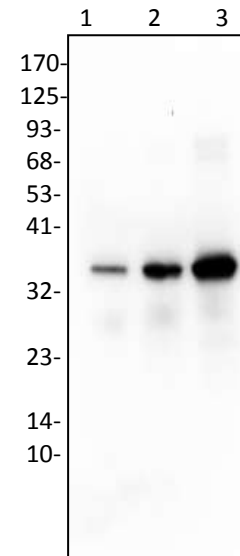


Anti-Alanine Racemase Antibody

CATALOG NO:	A1380-30T 30 µg (Trial size) A1380-100 100 µg
ALTERNATIVE NAMES:	Alanine Racemase Y354N, alr, dal
CONCENTRATION:	0.5 mg/ml
IMMUNOGEN:	Recombinant <i>Geobacillus stearothermophilus</i> Alanine Racemase (Cat. No. P1116)
INTERNAL ID:	BV-78
HOST/ISOTYPE:	Rabbit IgG
PURIFICATION:	Affinity purified rabbit IgG
FORM:	Liquid
FORMULATION:	In PBS pH 7.2, containing 30% glycerol, 0.5% BSA, 5 mM EDTA and 0.03% proclin
STORAGE CONDITIONS:	Store at -20°C. Avoid repeated freeze/thaw cycles.
DESCRIPTION:	Mutant Alanine Racemase (Y354N) (mAR-Y354N), a pyridoxal 5-phosphate (PLP) dependent enzyme catalyzes the interconversion of the L-Serine to D-Serine. In WT Alanine Racemase Tyr354 plays a crucial role in defining the strict specificity of AR for alanine, in converting L-Alanine to D-Alanine, which is an important component of the peptidoglycan layer of bacterial cell wall. By mutating the active site Tyr 354 to Asn, the specificity of the enzyme changes and it becomes a racemase with dual specificity for L- Alanine and L-Serine.
APPLICATION:	Western blot: 1-4 µg

Note: This information is only intended as a guide. The optimal dilutions must be determined by the user.



Western blot analysis of Alanine Racemase antibody in:

Lane 1: Alanine Racemase 2 ng
Lane 2: Alanine Racemase 10 ng
Lane 3: Alanine Racemase 50 ng

RELATED PRODUCTS:

- Mutant Alanine Racemase Y354N, Active, Recombinant (**Cat. No. P1116**)
- MART-1/Melan-A, mouse recombinant (**Cat. No. 4824**)
- MART-1/Melan-A Antibody (**Cat. No. 5823**)

FOR RESEARCH USE ONLY! Not to be used on humans.