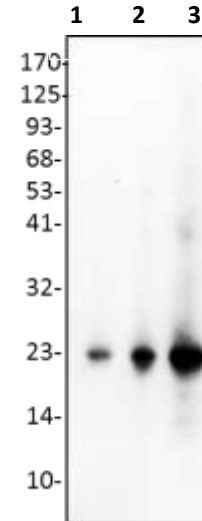


## Anti-SHH Antibody

<b>CATALOG NO:</b>	A1381-30T 30 µg (Trial size) A1381-100 100 µg
<b>ALTERNATIVE NAMES:</b>	Sonic hedgehog protein, HHG-1, SHH
<b>CONCENTRATION:</b>	0.5 mg/ml
<b>IMMUNOGEN:</b>	Human recombinant SHH (Cat. No. 4010)
<b>INTERNAL ID:</b>	BV-Q23
<b>HOST/ISOTYPE:</b>	Rabbit IgG
<b>PURIFICATION:</b>	Affinity purified rabbit IgG
<b>FORM:</b>	Liquid
<b>FORMULATION:</b>	In PBS pH 7.2, containing 30% glycerol, 0.5% BSA, 5 mM EDTA and 0.03% proclin
<b>SPECIES REACTIVITY:</b>	Human
<b>STORAGE CONDITIONS:</b>	Store at -20°C. Avoid repeated freeze/thaw cycles.
<b>DESCRIPTION:</b>	Intercellular signal essential for a variety of patterning events during development: signal produced by the notochord that induces ventral cell fate in the neural tube and somites, and the polarizing signal for patterning of the anterior-posterior axis of the developing limb bud. Displays both floor plate- and motor neuron-inducing activity. The threshold concentration of Nproduct required for motor neuron induction is 5-fold lower than that required for floor plate induction. Activates the transcription of target genes by interacting with its receptor PTCH1 to prevent normal inhibition by PTCH1 on the constitutive signaling activity of SMO.
<b>APPLICATION:</b>	Western blot: 1-4 µg

**Note:** This information is only intended as a guide. The optimal dilutions must be determined by the user.



**Western blot analysis of SHH antibody in:**

Lane 1: SHH human recombinant 2 ng  
Lane 2: SHH human recombinant 10 ng  
Lane 3: SHH human recombinant 50 ng

### RELATED PRODUCTS:

- Anti-SHH Antibody (**Cat. No. A1017**)
- Active Sonic Hedgehog, human recombinant (H-SHH) (**Cat. No. 4010**)
- Active Sonic Hedgehog (SHH), murine recombinant (**Cat. No. 4020**)
- Human CellExp™ SHH, human recombinant (**Cat. No. 7223**)
- Sonic Hedgehog, human recombinant (H-SHH) (**Cat. No. 7883**)
- Sonic Hedgehog, murine recombinant (H-SHH) (**Cat. No. 7884**)

**FOR RESEARCH USE ONLY! Not to be used on humans.**