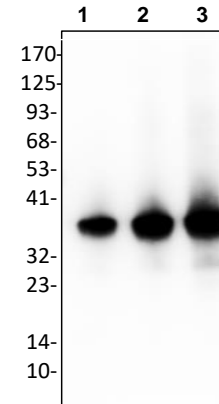


## Anti-D2HGDH Antibody

<b>CATALOG NO:</b>	A1382-30T 30 µg (Trial size) A1382-100 100 µg
<b>ALTERNATIVE NAMES:</b>	D-2-hydroxyglutarate dehydrogenase, D2HGDH, D2HGD, D-isomer specific 2-hydroxyacid dehydrogenase NAD-binding protein
<b>CONCENTRATION:</b>	0.5 mg/ml
<b>IMMUNOGEN:</b>	Full-length D2HGDH from <i>Acidaminococcus fermentans</i> (Cat. No. P1001)
<b>INTERNAL ID:</b>	BV-Q70
<b>HOST/ISOTYPE:</b>	Rabbit IgG
<b>PURIFICATION:</b>	Affinity purified rabbit IgG
<b>FORM:</b>	Liquid
<b>FORMULATION:</b>	In PBS pH 7.2, 30% glycerol, 0.5% BSA, 0.5 mM EDTA and 0.03% proclin
<b>SPECIES REACTIVITY:</b>	<i>Acidaminococcus fermentans</i>
<b>STORAGE CONDITIONS:</b>	Store at -20°C. Avoid repeated freeze/thaw cycles.
<b>DESCRIPTION:</b>	D-2-hydroxyglutarate (D2HG) level is significantly increased in metabolic diseases and various cancers such as acute myeloid leukemia. Studies suggest that the detection of D2HG serves as a biomarker assay related to IDH (isocitrate dehydrogenase) mutations. D2HGDH is a special NAD-dependent enzyme which reacts with D2HG specifically and converts D2HG to $\alpha$ -ketoglutarate. D2HGDH is a key enzyme to distinguish between two metabolites, D2HG and L-2-hydroxyglutarate (L2HG), during biomarker assays.
<b>APPLICATION:</b>	Western blot: 1-4 µg

**Note:** This information is only intended as a guide. The optimal dilutions must be determined by the user.



**Western blot analysis of D2HGDH antibody in:**

Lane 1: recombinant D2HGDH 2 ng  
Lane 2: recombinant D2HGDH 10 ng  
Lane 3: recombinant D2HGDH 50 ng

### RELATED PRODUCTS:

- Active D-2-Hydroxyglutarate Dehydrogenase (D2HGDH), Recombinant (**Cat. No. P1001**)
- PicoProbe™ D-2-Hydroxyglutarate Dehydrogenase Assay Kit (Fluorometric) (**Cat. No. K248**)
- D-2-Hydroxyglutarate (D2HG) Assay Kit (Colorimetric) (**Cat. No. K213**)
- Human recombinant IDH1 (Cat. No. 6379-100) (**Cat. No. 6379**)

**FOR RESEARCH USE ONLY! Not to be used on humans.**