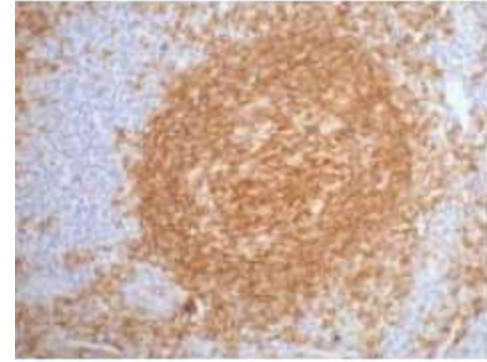


## Anti-CD20 Antibody (2F4)

<b>CATALOG NO:</b>	A1385-100 100 µl
<b>ALTERNATE NAMES:</b>	B-lymphocyte antigen CD20, B-lymphocyte surface antigen B1, Bp35, Leukocyte surface antigen Leu-16, Membrane-spanning 4-domains subfamily A member 1
<b>AMOUNT:</b>	100 µl
<b>CLONALITY:</b>	Monoclonal
<b>CLONE:</b>	2F4
<b>IMMUNOGEN:</b>	Synthesized peptide
<b>HOST/ISOTYPE:</b>	Mouse IgG1
<b>SPECIES REACTIVITY:</b>	Human, Mouse, Rat
<b>SPECIFICITY:</b>	The antibody detects endogenous CD20 proteins.
<b>PURIFICATION:</b>	The antibody was affinity-purified from mouse ascites by affinity-chromatography using specific immunogen.
<b>FORM:</b>	Liquid
<b>FORMULATION:</b>	PBS containing 50% glycerol, 0.5% BSA and 0.02% sodium azide
<b>STORAGE CONDITIONS:</b>	Store at -20°C. Avoid repeated freeze/thaw cycles.
<b>DESCRIPTION:</b>	This protein may be involved in the regulation of B-cell activation and proliferation.
<b>APPLICATION:</b>	IHC 1:200

**Note:** This information is only intended as a guide. The optimal dilutions must be determined by the user.



Immunohistochemistry (IHC) staining of Human Tonsil tissue paraffin-embedded, diluted at 1:200.

### RELATED PRODUCTS:

- Anti-CD20 (Rituximab), Chimeric Antibody (Cat. No. A1049)
- Human CellExp™ CD20/OX-2, human recombinant (Cat. No. 7384)

**FOR RESEARCH USE ONLY! Not to be used on humans.**