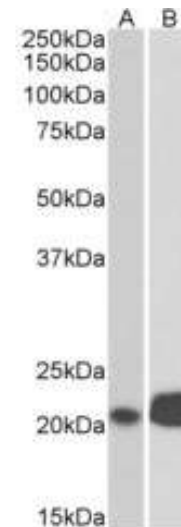


## Anti-CD3E Antibody

<b>CATALOG NO:</b>	A1386-100 100 µl
<b>ALTERNATE NAMES:</b>	T-cell surface glycoprotein CD3 epsilon chain, T-cell surface antigen T3/Leu-4 epsilon chain, CD_antigen: CD3e
<b>AMOUNT:</b>	100 µl
<b>IMMUNOGEN:</b>	Synthetic peptide (RKGQRDLYSGLNQR)
<b>MOL. WEIGHT</b>	23 kDa
<b>HOST/ISOTYPE:</b>	Goat IgG
<b>SPECIES REACTIVITY:</b>	Human, Rat, Pig
<b>PURIFICATION:</b>	Purified from goat serum by ammonium sulphate precipitation followed by antigen affinity chromatography using the immunizing peptide
<b>FORM:</b>	Liquid
<b>FORMULATION:</b>	In Tris saline, 0.02% sodium azide, pH7.3 with 0.5% bovine serum albumin
<b>STORAGE CONDITIONS:</b>	Store at -20°C. Avoid repeated freeze/thaw cycles.
<b>DESCRIPTION:</b>	The CD3 complex mediates signal transduction, resulting in T-cell activation and proliferation. Required for normal immune responses.
<b>APPLICATION:</b>	WB

**Note: This information is only intended as a guide. The optimal dilutions must be determined by the user.**



**Western Blot analysis using Anti-CD3E Polyclonal Antibody (0.1µg/ml) in:**

**(A) Jurkat cell lysates  
(B) Molt4 cell lysates**

### RELATED PRODUCTS:

- CD3E, human recombinant (**Cat. No. 7342**)
- CD3G, human recombinant (**Cat. No. 7313**)
- CD3d Antibody (**Cat. No. 6936**)
- Human CellExp™ CD3 epsilon & CD3 delta Heterodimer, Human Recombinant (**Cat. No. P1183**)
- CD3 FITC Monoclonal Antibody (Clone OKT3) (**Cat. No. 6952**)
- CD3d Antibody (**Cat. No. 6936**)

**FOR RESEARCH USE ONLY! Not to be used on humans.**