

Anti-CD47 Antibody

CATALOG NO:	A1387-100 100 µl
ALTERNATE NAMES:	Leukocyte surface antigen CD47, Antigenic surface determinant protein OA3, Integrin-associated protein, IAP, Protein MER6
AMOUNT:	100 µl
IMMUNOGEN:	Synthesized peptide derived from the Internal region of human CD47 (61-110aa).
HOST/ISOTYPE:	Rabbit IgG
SPECIES REACTIVITY:	Human
SPECIFICITY:	CD47 Polyclonal Antibody detects endogenous levels of CD47 protein.
PURIFICATION:	The antibody was affinity-purified from rabbit serum by affinity-chromatography using specific immunogen.
FORM:	Liquid
FORMULATION:	PBS containing 50% glycerol, 0.5% BSA and 0.02% sodium azide
STORAGE CONDITIONS:	Store at -20°C. Avoid repeated freeze/thaw cycles.
DESCRIPTION:	Has a role in both cell adhesion by acting as an adhesion receptor for THBS1 on platelets, and in the modulation of integrins. Plays an important role in memory formation and synaptic plasticity in the hippocampus (By similarity). Receptor for SIRPA, binding to which prevents maturation of immature dendritic cells and inhibits cytokine production by mature dendritic cells. Interaction with SIRPG mediates cell-cell adhesion, enhances superantigen-dependent T-cell-mediated proliferation and costimulates T-cell activation. May play a role in membrane transport and/or integrin dependent signal transduction. May prevent premature elimination of red blood cells. May be involved in membrane permeability changes induced following virus infection.
APPLICATION:	WB 1:500-1:2000 IHC 1:100-1:300 ELISA 1:20000

Note: This information is only intended as a guide. The optimal dilutions must be determined by the user.

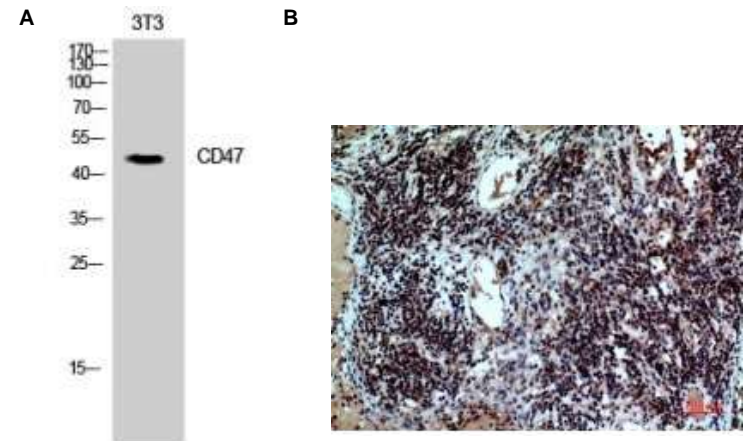


Fig. A. Western Blot (WB) analysis of 3T3 cells using CD47 Polyclonal Antibody

Fig. B. Immunohistochemistry (IHC) analysis of paraffin-embedded Human Lymph Nodes, antibody was diluted at 1:100.

RELATED PRODUCTS:

- CD223 (LAG3) Polyclonal Antibody (Cat. No. A1067-100)
- CD86 Polyclonal Antibody (Cat. No. A1068-100)
- Tim-3 Antibody (Cat. No. 3808-100)
- PD-1/PDCD1 Antibody (Cat. No. 6931-50)
- CD160 Polyclonal Antibody (Cat. No. A1072-100)
- Human CellExp™ CD47, human recombinant (Cat. No. 7385-10)

FOR RESEARCH USE ONLY! Not to be used on humans.