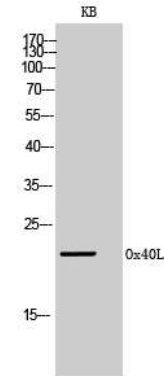


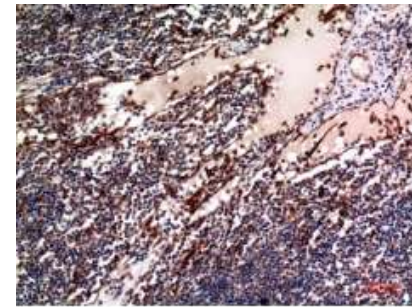
Anti-OX40L Antibody

CATALOG NO:	A1389-100 100 µl
ALTERNATE NAMES:	Tumor necrosis factor ligand superfamily member 4, Glycoprotein Gp34, OX40 ligand, OX40L, TAX transcriptionally-activated glycoprotein 1, CD252
AMOUNT:	100 µl
IMMUNOGEN:	Synthesized peptide derived from the Internal region of human Ox40L (31-80aa)
MOL. WEIGHT	21 kDa
HOST/ISOTYPE:	Rabbit IgG
SPECIES REACTIVITY:	Human
SPECIFICITY:	OX40L Polyclonal Antibody detects endogenous levels of Ox40L protein.
PURIFICATION:	The antibody was affinity-purified from rabbit serum by affinity-chromatography using specific immunogen.
FORM:	Liquid
FORMULATION:	PBS containing 50% glycerol, 0.5% BSA and 0.02% sodium azide
STORAGE CONDITIONS:	Store at -20°C. Avoid repeated freeze/thaw cycles.
DESCRIPTION:	Cytokine that binds to TNFRSF4. Co-stimulates T-cell proliferation and cytokine production
APPLICATION:	WB 1:500-1:2000 IHC 1:100-1:300 ELISA 1:10000

Note: This information is only intended as a guide. The optimal dilutions must be determined by the user.



Western Blot (WB) analysis of KB cells using Ox40L Polyclonal Antibody.



Immunohistochemistry (IHC) analysis of paraffin-embedded Human Lymph, antibody was diluted at 1:100.

RELATED PRODUCTS:

- OX40 Antibody (Cat. No. 3890-100)
- OX40 Ligand / TNFSF4 (Human) ELISA Kit (Cat. No. K4174-100)
- OX40/CD134 (Human) ELISA Kit (Cat. No. K4173-100)
- Human CellExp™ TNFRSF4/OX40 /CD134, human recombinant (Cat. No. 7438)

FOR RESEARCH USE ONLY! Not to be used on humans.