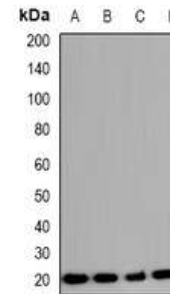


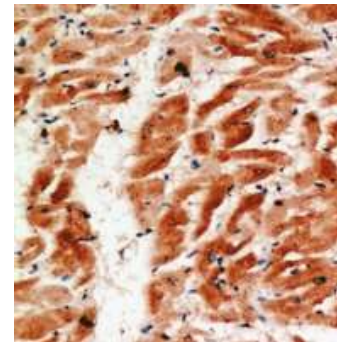
Anti-COXIV Isoform 2 Antibody

CATALOG NO:	A1401-100
ALTERNATIVE NAMES:	COX4L2; Cytochrome c oxidase subunit 4 isoform 2 mitochondrial; Cytochrome c oxidase subunit IV isoform 2; COX IV-2
AMOUNT:	100 µl
IMMUNOGEN:	KLH-conjugated synthetic peptide encompassing a sequence within the center region of human COX4-2
HOST/ISOTYPE:	Rabbit IgG
CLONALITY:	Polyclonal
SPECIFICITY:	Recognizes endogenous levels of COX4-2 protein
SPECIES REACTIVITY:	Human, Mouse and Rat
PURIFICATION:	The antibody was purified by affinity chromatography
FORM:	Liquid
FORMULATION:	Supplied in 0.42% Potassium phosphate; 0.87% Sodium chloride; pH 7.3; 30% glycerol and 0.01% sodium azide
STORAGE CONDITIONS:	Shipped at 4°C. For long term storage store at -20°C in small aliquots to prevent freeze-thaw cycles
DESCRIPTION:	This protein is one of the nuclear-coded polypeptide chains of cytochrome c oxidase, the terminal oxidase in mitochondrial electron transport.
APPLICATION:	WB; 1:500 – 1:2000 IH; 1:50 – 1:200 IF/IC; 1:50 – 1:100

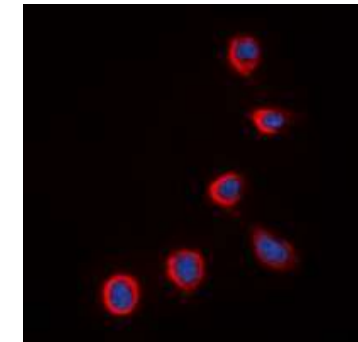
Note: This information is only intended as a guide. The optimal dilutions must be determined by the user.



Western blot analysis of COX4-2 expression in A549 (A); K562 (B); mouse lung (C); rat lung (D) whole cell lysates



Immunohistochemical analysis of COX4-2 staining in human heart formalin fixed paraffin embedded tissue section.



Immunofluorescent analysis of COX4-2 staining in K562 cells

RELATED PRODUCTS:

- PPAR gamma Antibody (Cat. No. 3809-100)
- DNMT1 Antibody (Cat. No. 3946-100)
- KLF4 Antibody (4G6E11) (Cat. No. 5300-100)
- NIF1 Antibody (Cat. No. 3737-100)

FOR RESEARCH USE ONLY! Not to be used on humans.