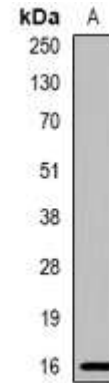


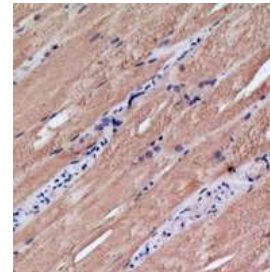
Anti-MRPS18C Antibody

CATALOG NO:	A1407-100
ALTERNATIVE NAMES:	28S ribosomal protein S18c mitochondrial; MRP-S18-c; Mrps18-c; S18mt-c; 28S ribosomal protein S18-1 mitochondrial; MRP-S18-1
AMOUNT:	100 µl
IMMUNOGEN:	KLH-conjugated synthetic peptide encompassing a sequence within the center region of human MRPS18C
HOST/ISOTYPE:	Rabbit IgG
CLONALITY:	Polyclonal
SPECIFICITY:	Recognizes endogenous levels of MRPS18C protein
SPECIES REACTIVITY:	Human
PURIFICATION:	The antibody was purified by affinity chromatography
FORM:	Liquid
FORMULATION:	Supplied in 0.42% Potassium phosphate; 0.87% Sodium chloride; pH 7.3; 30% glycerol and 0.01% sodium azide
STORAGE CONDITIONS:	Shipped at 4°C. For long term storage store at -20°C in small aliquots to prevent freeze-thaw cycles
DESCRIPTION:	There are 3 mitochondrial isoforms of bS18 in mammalia, localizing to 3 distinct sites in the mitoribosome. bS18m (bs18c, this protein) binds to the same site as bacterial bS18, mS40 (bS18b) binds to a novel location of the 28S small subunit, and mL66 (bS18a) binds to the 39S large subunit.
APPLICATION:	WB; 1:500 – 1:2000 IH; 1:50 – 1:200 IF/IC; 1:50 – 1:100

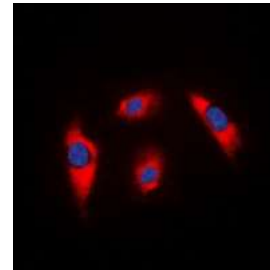
Note: This information is only intended as a guide. The optimal dilutions must be determined by the user.



Western blot analysis of MRPS18C expression in K562 (A) whole cell lysates



Immunohistochemical analysis of MRPS18C staining in human skeletal muscle formalin fixed paraffin embedded tissue section.



Immunofluorescent analysis of MRPS18C staining in K562 cells

RELATED PRODUCTS:

- PPAR gamma Antibody (Cat. No. 3809-100)
- DNMT1 Antibody (Cat. No. 3946-100)
- KLF4 Antibody (4G6E11) (Cat. No. 5300-100)
- NIF1 Antibody (Cat. No. 3737-100)

FOR RESEARCH USE ONLY! Not to be used on humans.