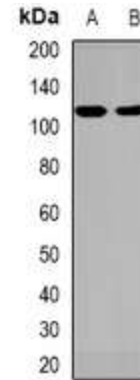


## Anti-MLK4 Antibody

<b>CATALOG NO:</b>	A1410-100
<b>ALTERNATIVE NAMES:</b>	KIAA1804; Mitogen-activated protein kinase kinase kinase MLK4; Mixed lineage kinase 4
<b>AMOUNT:</b>	100 µl
<b>IMMUNOGEN:</b>	KLH-conjugated synthetic peptide encompassing a sequence within the center region of human MLK4
<b>HOST/ISOTYPE:</b>	Rabbit IgG
<b>CLONALITY:</b>	Polyclonal
<b>SPECIFICITY:</b>	Recognizes endogenous levels of MLK4 protein
<b>SPECIES REACTIVITY:</b>	Human
<b>PURIFICATION:</b>	The antibody was purified by affinity chromatography
<b>FORM:</b>	Liquid
<b>FORMULATION:</b>	Supplied in 0.42% Potassium phosphate; 0.87% Sodium chloride; pH 7.3; 30% glycerol and 0.01% sodium azide
<b>STORAGE CONDITIONS:</b>	Shipped at 4°C. For long term storage store at -20°C in small aliquots to prevent freeze-thaw cycles
<b>DESCRIPTION:</b>	Negative regulator of TLR4 signaling. Does not activate JNK1/MAPK8 pathway, p38/MAPK14, nor ERK2/MAPK1 pathways.
<b>APPLICATION:</b>	WB; 1:500 – 1:2000

**Note:** This information is only intended as a guide. The optimal dilutions must be determined by the user.



Western blot analysis of MLK4 expression in HT29 (A); HeLa (B) whole cell lysates

### RELATED PRODUCTS:

- PPAR gamma Antibody (Cat. No. 3809-100)
- DNMT1 Antibody (Cat. No. 3946-100)
- KLF4 Antibody (4G6E11) (Cat. No. 5300-100)
- NIF1 Antibody (Cat. No. 3737-100)

**FOR RESEARCH USE ONLY! Not to be used on humans.**