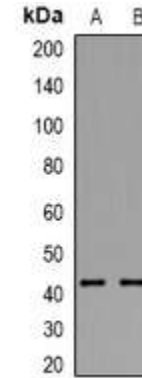


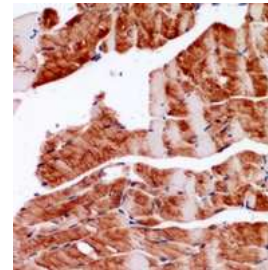
## Anti-ACTC1 Antibody

|                            |  |
|----------------------------|--|
| <b>CATALOG NO:</b>         | A1411-100  |
| <b>ALTERNATIVE NAMES:</b>  | ACTC; Actin alpha cardiac muscle 1; Alpha-cardiac actin  |
| <b>AMOUNT:</b>             | 100 µl   |
| <b>IMMUNOGEN:</b>          | KLH-conjugated synthetic peptide encompassing a sequence within the center region of human Alpha-actin   |
| <b>HOST/ISOTYPE:</b>       | Rabbit IgG   |
| <b>CLONALITY:</b>          | Polyclonal   |
| <b>SPECIFICITY:</b>        | Recognizes endogenous levels of Alpha-actin protein  |
| <b>SPECIES REACTIVITY:</b> | Human, Mouse and Rat   |
| <b>PURIFICATION:</b>       | The antibody was purified by affinity chromatography   |
| <b>FORM:</b>               | Liquid   |
| <b>FORMULATION:</b>        | Supplied in 0.42% Potassium phosphate; 0.87% Sodium chloride; pH 7.3; 30% glycerol and 0.01% sodium azide  |
| <b>STORAGE CONDITIONS:</b> | Shipped at 4°C. For long term storage store at -20°C in small aliquots to prevent freeze-thaw cycles   |
| <b>DESCRIPTION:</b>        | Actins are highly conserved proteins that are involved in various types of cell motility and are ubiquitously expressed in all eukaryotic cells. |
| <b>APPLICATION:</b>        | WB; 1:500 – 1:2000<br>IH; 1:50 – 1:200   |

**Note:** This information is only intended as a guide. The optimal dilutions must be determined by the user.



Western blot analysis of ACTC1 expression in mouse heart (A); mouse lung (B) whole cell lysates



Immunohistochemical analysis of ACTC1 staining in mouse skeletal muscle formalin fixed paraffin embedded tissue section.

### RELATED PRODUCTS:

- PPAR gamma Antibody (Cat. No. 3809-100)
- DNMT1 Antibody (Cat. No. 3946-100)
- KLF4 Antibody (4G6E11) (Cat. No. 5300-100)
- NIF1 Antibody (Cat. No. 3737-100)

**FOR RESEARCH USE ONLY! Not to be used on humans.**