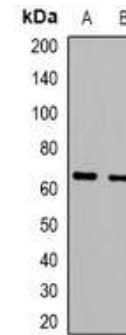


Anti-IL-16 Antibody

CATALOG NO:	A1413-100
ALTERNATIVE NAMES:	Pro-interleukin-16
AMOUNT:	100 µl
IMMUNOGEN:	KLH-conjugated synthetic peptide encompassing a sequence within the N-term region of human IL-16
HOST/ISOTYPE:	Rabbit IgG
CLONALITY:	Polyclonal
SPECIFICITY:	Recognizes endogenous levels of IL-16 protein
SPECIES REACTIVITY:	Human
PURIFICATION:	The antibody was purified by affinity chromatography
FORM:	Liquid
FORMULATION:	Supplied in 0.42% Potassium phosphate; 0.87% Sodium chloride; pH 7.3; 30% glycerol and 0.01% sodium azide
STORAGE CONDITIONS:	Shipped at 4°C. For long term storage store at -20°C in small aliquots to prevent freeze-thaw cycles
DESCRIPTION:	Interleukin-16 stimulates a migratory response in CD4+ lymphocytes, monocytes, and eosinophils. Primes CD4+ T-cells for IL-2 and IL-15 responsiveness. Also induces T-lymphocyte expression of interleukin 2 receptor. Ligand for CD4. Isoform 1 may act as a scaffolding protein that anchors ion channels in the membrane. Isoform 3 is involved in cell cycle progression in T-cells. Appears to be involved in transcriptional regulation of SKP2 and is probably part of a transcriptional repression complex on the core promoter of the SKP2 gene. May act as a scaffold for GABPB1 (the DNA-binding subunit the GABP transcription factor complex) and HDAC3 thus maintaining transcriptional repression and blocking cell cycle progression in resting T-cells.
APPLICATION:	WB; 1:500 – 1:2000

Note: This information is only intended as a guide. The optimal dilutions must be determined by the user.



Western blot analysis of IL-16 expression in human blood (A); Jurkat (B) whole cell lysates

RELATED PRODUCTS:

- PPAR gamma Antibody (Cat. No. 3809-100)
- DNMT1 Antibody (Cat. No. 3946-100)
- KLF4 Antibody (4G6E11) (Cat. No. 5300-100)
- NIF1 Antibody (Cat. No. 3737-100)

FOR RESEARCH USE ONLY! Not to be used on humans.