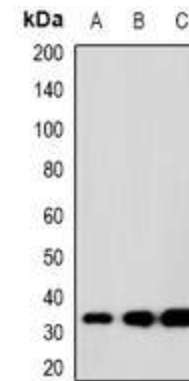


Anti-SCP3 Antibody

| | |
|----------------------------|---|
| CATALOG NO: | A1415-100 |
| ALTERNATIVE NAMES: | SCP3; Synaptonemal complex protein 3; SCP-3, SYCP3 |
| AMOUNT: | 100 µl |
| IMMUNOGEN: | KLH-conjugated synthetic peptide encompassing a sequence within the center region of SCP3 |
| HOST/ISOTYPE: | Rabbit IgG |
| CLONALITY: | Polyclonal |
| SPECIFICITY: | Recognizes endogenous levels of SCP3 protein |
| SPECIES REACTIVITY: | Human |
| PURIFICATION: | The antibody was purified by affinity chromatography |
| FORM: | Liquid |
| FORMULATION: | Supplied in 0.42% Potassium phosphate; 0.87% Sodium chloride; pH 7.3; 30% glycerol and 0.01% sodium azide |
| STORAGE CONDITIONS: | Shipped at 4°C. For long term storage store at -20°C in small aliquots to prevent freeze-thaw cycles |
| DESCRIPTION: | Component of the synaptonemal complexes (SCS), formed between homologous chromosomes during meiotic prophase. Required for centromere pairing during meiosis in male germ cells. Required for normal meiosis during spermatogenesis and male fertility. Plays a lesser role in female fertility. Required for efficient phosphorylation of HORMAD1 and HORMAD2. |
| APPLICATION: | WB; 1:500 – 1:2000 |

Note: This information is only intended as a guide. The optimal dilutions must be determined by the user.



Western blot analysis of SCP3 expression in K562 (A); 22RV1 (B); H480 (C) whole cell lysates

RELATED PRODUCTS:

- PPAR gamma Antibody (Cat. No. 3809-100)
- DNMT1 Antibody (Cat. No. 3946-100)
- KLF4 Antibody (4G6E11) (Cat. No. 5300-100)
- NIF1 Antibody (Cat. No. 3737-100)

FOR RESEARCH USE ONLY! Not to be used on humans.