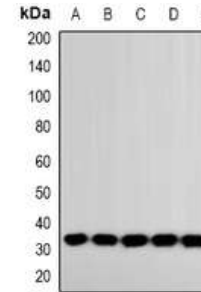


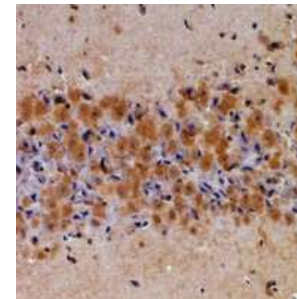
Anti-LXN Antibody

CATALOG NO:	A1417-100
ALTERNATIVE NAMES:	Latexin; Endogenous carboxypeptidase inhibitor; ECI; Protein MUM; Tissue carboxypeptidase inhibitor; TCI
AMOUNT:	100 µl
IMMUNOGEN:	KLH-conjugated synthetic peptide encompassing a sequence within the center region of LXN
HOST/ISOTYPE:	Rabbit IgG
CLONALITY:	Polyclonal
SPECIFICITY:	Recognizes endogenous levels of LXN protein
SPECIES REACTIVITY:	Human, Mouse and Rat
PURIFICATION:	The antibody was purified by affinity chromatography
FORM:	Liquid
FORMULATION:	Supplied in 0.42% Potassium phosphate; 0.87% Sodium chloride; pH 7.3; 30% glycerol and 0.01% sodium azide
STORAGE CONDITIONS:	Shipped at 4°C. For long term storage store at -20°C in small aliquots to prevent freeze-thaw cycles
DESCRIPTION:	Hardly reversible, non-competitive, and potent inhibitor of CPA1, CPA2 and CPA4 (By similarity). May play a role in inflammation.
APPLICATION:	WB; 1:500 – 1:2000 IHC; 1:50 – 1:200

Note: This information is only intended as a guide. The optimal dilutions must be determined by the user.



Western blot analysis of Latexin expression in 22RV1 (A); MCF7 (B); HT29 (C); BT474 (D); mouse heart (E) whole cell lysates.



Immunohistochemical analysis of Latexin staining in rat brain formalin fixed paraffin embedded tissue section

RELATED PRODUCTS:

- PPAR gamma Antibody (Cat. No. 3809-100)
- DNMT1 Antibody (Cat. No. 3946-100)
- KLF4 Antibody (4G6E11) (Cat. No. 5300-100)
- NIF1 Antibody (Cat. No. 3737-100)

FOR RESEARCH USE ONLY! Not to be used on humans.