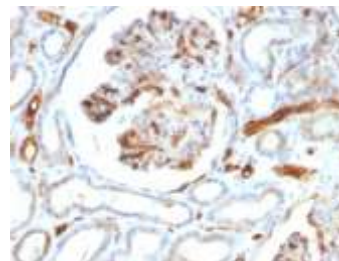


Anti-Adiponectin Antibody (ADPN/1370)

CATALOG NO:	A1420-100
ALTERNATIVE NAMES:	Adiponectin, Adipocyte complement-related 30kDa protein (ACRP30), Adipocyte-specific secretory protein, Adiponectin, C1Q and collagen domain containing (ACDC), ADIPOQ, Adipose most abundant gene transcript 1 protein, Adipose specific collagen like factor; ADIPQTL1, ADPN, APM-1, Gelatin-binding protein 28 (GBP28)
AMOUNT:	100 µg
IMMUNOGEN:	Recombinant human Adiponectin protein fragment
HOST/ISOTYPE:	Mouse IgG2b
CLONALITY:	Monoclonal
CLONE:	ADPN/1370
MOL WEIGHT:	26-30 kDa
SPECIES REACTIVITY:	Human
PURIFICATION:	Protein A/G purified
FORM:	Liquid
FORMULATION:	Supplied in 10 mM PBS with 0.05% BSA & 0.05% azide
STORAGE CONDITIONS:	Shipped at 4°C. For long term storage store at -20°C in small aliquots to prevent freeze-thaw cycles
DESCRIPTION:	Adipocytokines are hormones produced in adipose tissue. Adiponectin is abundantly present in plasma and has insulin like effect on glucose levels in the blood. Plasma adiponectin levels are low in insulin resistant patients who are obese, have diabetes mellitus type 2 or HIV-lipodystrophy. In women adiponectin levels tend to be higher than in men, which may be due to androgens suppressing adiponectin levels. Furthermore adiponectin and leptin are both indicated in regulating body weight through direct action on the hypothalamus, influencing appetite. Obese people have low adiponectin levels while levels in anorexia patients are high. Adiponectin acts as ligand for various receptors, two of which have been identified, one probably involved in carbohydrate assimilation, the other in tuning the rate of metabolism.
APPLICATION:	ELISA FC (0.5-1 ug/1X10 ⁶ cells) IF (1-2 ug/ml) IHC (Formalin-fixed) (1-2 ug/ml for 30 minutes at RT)

(Staining of formalin-fixed tissues requires boiling tissue sections in 10 mM Citrate Buffer, pH 6.0, for 10-20 min followed by cooling at RT for 20 minutes)

Note: This information is only intended as a guide. The optimal dilutions must be determined by the user.



Formalin-fixed, paraffin-embedded
Human kidney stained with
Adiponectin Monoclonal Antibody

RELATED PRODUCTS:

- Anti-ACTH Antibody (SPM501) (Cat. No. A1418)
- Anti-ACTH Antibody (r57) (Cat. No. A1419)
- Anti-Adiponectin Antibody (ADPN/1370) (Cat. No. A1420)
- Anti-Adipophilin Antibody (ADFP/1365) (Cat. No. A1421)
- Anti-Adipophilin Antibody (ADFP/1494) (Cat. No. A1422)
- Anti-AFP Antibody (C3) (Cat. No. A1423)
- Anti-ALDH1A1 Antibody (ALDH1A1/1381) (Cat. No. A1424)
- Anti-ALK Antibody (ALK/1503) (Cat. No. A1425)
- Anti-Alkaline Phosphatase Antibody (ALPL/597) (Cat. No. A1426)
- Anti-Alpha-1-Antitrypsin Antibody (AAT/1378) (Cat. No. A1427)

FOR RESEARCH USE ONLY! Not to be used on humans.