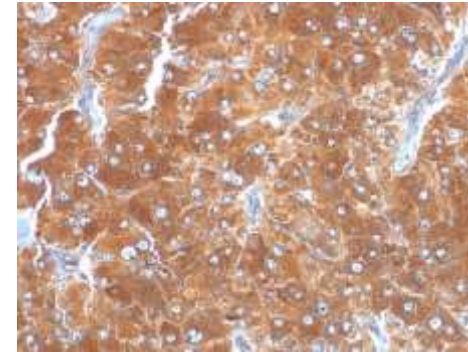


Anti-Adipophilin Antibody (ADFP/1494)

CATALOG NO:	A1422-100
ALTERNATIVE NAMES:	Adipophilin, ADFP, Adipose differentiation-related protein (ADRP), Perilipin-2 (PLIN2)
AMOUNT:	100 µg
IMMUNOGEN:	Recombinant human Adipophilin protein fragment (aa 249-376)
HOST/ISOTYPE:	Mouse IgG2b, kappa
CLONALITY:	Monoclonal
CLONE:	ADFP/1494
MOL WEIGHT:	48 kDa
SPECIES REACTIVITY:	Human
PURIFICATION:	Protein A/G purification
FORM:	Liquid
FORMULATION:	Supplied in 10 mM PBS with 0.05% BSA & 0.05% azide
STORAGE CONDITIONS:	Shipped at 4°C. For long term storage store at -20°C in small aliquots to prevent freeze-thaw cycles
DESCRIPTION:	Adipophilin belongs to the perilipin family, members of which coat intracellular lipid storage droplets. This protein is associated with the lipid globule surface membrane material, and maybe involved in development and maintenance of adipose tissue. However, it is not restricted to adipocytes as previously thought, but is found in a wide range of cultured cell lines, including fibroblasts, endothelial and epithelial cells, and tissues, such as lactating mammary gland, adrenal cortex, Sertoli and Leydig cells, and hepatocytes in alcoholic liver cirrhosis, suggesting that it may serve as a marker of lipid accumulation in diverse cell types and diseases.
APPLICATION:	ELISA FC: 0.5-1 µg/1X10 ⁶ cells IFC: 0.5-1 µg/ml IHC: (Formalin-fixed): 2-4µg/ml for 30 minutes at RT

Note: This information is only intended as a guide. The optimal dilutions must be determined by the user.



Formalin-fixed, paraffin-embedded human Adrenal stained with Adipophilin Monoclonal Antibody (ADFP/1494).

RELATED PRODUCTS:

- Anti-ACTH Antibody (SPM501) (Cat. No. A1418)
- Anti-ACTH Antibody (r57) (Cat. No. A1419)
- Anti-Adiponectin Antibody (ADPN/1370) (Cat. No. A1420)
- Anti-Adipophilin Antibody (ADFP/1365) (Cat. No. A1421)
- Anti-AFP Antibody (C3) (Cat. No. A1423)
- Anti-ALDH1A1 Antibody (ALDH1A1/1381) (Cat. No. A1424)
- Anti-ALK Antibody (ALK/1503) (Cat. No. A1425)
- Anti-Alkaline Phosphatase Antibody (ALPL/597) (Cat. No. A1426)
- Anti-Alpha-1-Antitrypsin Antibody (AAT/1378) (Cat. No. A1427)

FOR RESEARCH USE ONLY! Not to be used on humans.