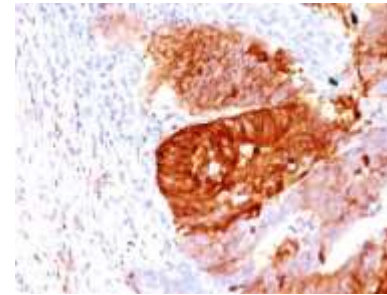
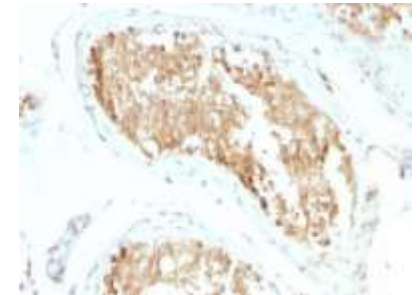


## Anti-ALDH1A1 Antibody (ALDH1A1/1381)

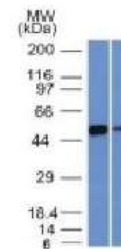
<b>CATALOG NO:</b>	A1424-100
<b>ALTERNATIVE NAMES:</b>	Acetaldehyde dehydrogenase 1, AHD2, ALDC, Aldehyde dehydrogenase 1 soluble, Aldehyde dehydrogenase 1A1, Aldehyde dehydrogenase family 1 member A1, ALDH-E1; ALDH1, ALDH1A1, epididymis luminal protein 12, epididymis luminal protein 9, epididymis secretory sperm binding protein Li 53e, HEL-S-53e, PUMB1, RALDH1, Retinal dehydrogenase 1
<b>AMOUNT:</b>	100 µg
<b>IMMUNOGEN:</b>	Purified recombinant fragment of human ALDH1A1 (aa 315-434)
<b>HOST/ISOTYPE:</b>	Mouse IgG1
<b>CLONALITY:</b>	Monoclonal
<b>CLONE:</b>	ALDH1A1/1381
<b>MOL WEIGHT:</b>	56 kDa
<b>SPECIES REACTIVITY:</b>	Human
<b>PURIFICATION:</b>	Protein A/G purification
<b>FORM:</b>	Liquid
<b>FORMULATION:</b>	Supplied in 10 mM PBS with 0.05% BSA & 0.05% azide
<b>STORAGE CONDITIONS:</b>	Shipped at 4°C. For long term storage store at -20°C in small aliquots to prevent freeze-thaw cycles
<b>DESCRIPTION:</b>	ALDH1A1 belongs to the ALDH enzymes, a family of evolutionarily conserved enzymes comprised of 19 isoforms that are localized in the cytoplasm, mitochondria or nucleus. ALDH1A1 is predominantly expressed in the epithelium of testis, brain, eye, liver, kidney, as well as neural and hematopoietic stem cells. Reportedly, high ALDH1A1 expression is found in solitary fibrous tumor (SFT) and hemangiopericytoma (HPC), compared to meningiomas and synovial sarcomas. In combination with CD34, ALDH1A1 may be useful for the differentiation among SFT, HPC, meningioma, and synovial sarcoma.
<b>APPLICATION:</b>	FC: 0.5-1 µg/1X10 <sup>6</sup> cells in 0.1 ml IF: 1-2 µg/ml WB: 0.5-1 µg/m IHC: (Formalin-fixed): 0.5-1 µg/ml for 30 minutes at RT (Staining of formalin-fixed tissues requires boiling tissue sections in 10mM citrate buffer, pH 6.0, for 10-20 min followed by cooling at RT for 20 minutes) <b>Note: This information is only intended as a guide. The optimal dilutions must be determined by the user.</b>



Formalin-fixed, paraffin-embedded Human Colon Carcinoma stained with ALDH1A1 Monoclonal Antibody (ALDH1A1/1381).



Formalin-fixed, paraffin-embedded Human Testicular Carcinoma stained with ALDH1A1 Monoclonal Antibody (ALDH1A1/1381).



Western Blot of K562 and lung lysate using ALDH1A1 Monoclonal Antibody (ALDH1A1/1381)

### RELATED PRODUCTS:

- Anti-ACTH Antibody (SPM501) (Cat. No. A1418)
- Anti-ACTH Antibody (r57) (Cat. No. A1419)
- Anti-Adiponectin Antibody (ADPN/1370) (Cat. No. A1420)
- Anti-Adipophilin Antibody (ADFP/1365) (Cat. No. A1421)
- Anti-Adipophilin Antibody (ADFP/1494) (Cat. No. A1422)
- Anti-AFP Antibody (C3) (Cat. No. A1423)
- Anti-ALK Antibody (ALK/1503) (Cat. No. A1425)
- Anti-Alkaline Phosphatase Antibody (ALPL/597) (Cat. No. A1426)
- Anti-Alpha-1-Antitrypsin Antibody (AAT/1378) (Cat. No. A1427)

**FOR RESEARCH USE ONLY! Not to be used on humans.**