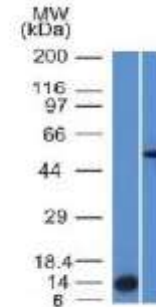


Anti-ALK Antibody (ALK/1503)

CATALOG NO:	A1425-100
ALTERNATIVE NAMES:	ALK Tyrosine Kinase Receptor, ALK/NPM1 fusion gene, Anaplastic lymphoma kinase Ki1, Anaplastic Lymphoma Kinase p80, anaplastic lymphoma receptor tyrosine kinase, CD246, mutant anaplastic lymphoma kinase, NBLST3, Tcrz, TFG/ALK
AMOUNT:	100 µg
IMMUNOGEN:	Recombinant human ALK protein fragment (aa1360-1460)
HOST/ISOTYPE:	Mouse IgG1, kappa
CLONALITY:	Monoclonal
CLONE:	ALK/1503
MOL WEIGHT:	80 kDa (hybrid); 200 kDa (wild type)
SPECIES REACTIVITY:	Human
PURIFICATION:	Protein A/G purification
FORM:	Liquid
FORMULATION:	Supplied in 10 mM PBS with 0.05% BSA & 0.05% azide
STORAGE CONDITIONS:	Shipped at 4°C. For long term storage store at -20°C in small aliquots to prevent freeze-thaw cycles
DESCRIPTION:	The wild-type anaplastic lymphoma kinase (ALK) protein is a 200kDa transmembrane receptor tyrosine kinase. Its expression is restricted to a few scattered cells in the nervous system (some glial cells and neurons, and a few endothelial cells and pericytes). The hybrid gene, NPM-ALK, created by the t(2;5)(p23;q35) chromosomal translocation encodes part of the nucleolar phosphoprotein, nucleophosmin (NPM), joined to the entire cytoplasmic portion of the anaplastic lymphoma kinase (ALK) receptor tyrosine kinase. As a consequence, the ALK gene comes under the control of the NPM promoter, which induces a permanent and ubiquitous transcription of the NPM-ALK hybrid gene, resulting in the production of a 80kDa NPM-ALK chimeric protein. This translocation is found in anaplastic large cell lymphomas (ALCL). Reportedly, expression of ALK indicates a better prognosis. Approximately 5%-10% of non-small cell lung carcinomas also express ALK protein producing a cytoplasmic staining pattern. This MAb also reacts with blood vessels that serve as an internal positive control.
APPLICATION:	FC: 0.5-1 µg/1X10 ⁶ cells in 0.1 ml IF: 0.5-1 µg/ml

WB: 0.5-1 µg/ml

Note: This information is only intended as a guide. The optimal dilutions must be determined by the user.



Western Blot Analysis (A) Recombinant Protein (B) HepG2 Cell lysate using ALK-1 Monoclonal Antibody (ALK/1503)

RELATED PRODUCTS:

- Anti-ACTH Antibody (SPM501) (**Cat. No. A1418**)
- Anti-ACTH Antibody (r57) (**Cat. No. A1419**)
- Anti-Adiponectin Antibody (ADPN/1370) (**Cat. No. A1420**)
- Anti-Adipophilin Antibody (ADFP/1365) (**Cat. No. A1421**)
- Anti-Adipophilin Antibody (ADFP/1494) (**Cat. No. A1422**)
- Anti-AFP Antibody (C3) (**Cat. No. A1423**)
- Anti-ALDH1A1 Antibody (ALDH1A1/1381) (**Cat. No. A1424**)
- Anti-Alkaline Phosphatase Antibody (ALPL/597) (**Cat. No. A1426**)
- Anti-Alpha-1-Antitrypsin Antibody (AAT/1378) (**Cat. No. A1427**)

FOR RESEARCH USE ONLY! Not to be used on humans.