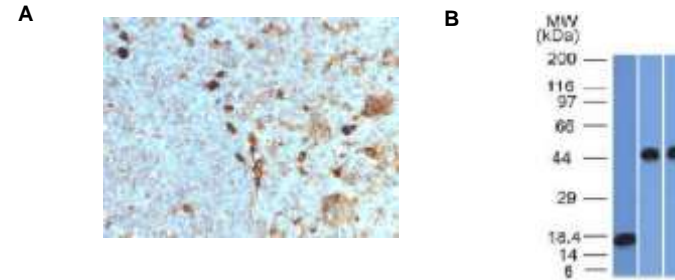


Anti-Alpha-1-Antitrypsin Antibody (AAT/1378)

CATALOG NO:	A1427-100
ALTERNATIVE NAMES:	A1AT, AAT, Alpha 1 antiproteinase Alpha 1-antitrypsin, Alpha-1 protease inhibitor, Alpha-1-antiproteinase, alpha1 proteinase inhibitor, Alpha1AT, Dom1, Serine (or cysteine) proteinase inhibitor clade A member 1, Serine protease inhibitor 1-1, Serine protease inhibitor A1a, Serpin A1a, Serpin peptidase inhibitor clade A member 1, Serpina1, Short peptide from AAT, SPAAT, Spi1-1
AMOUNT:	100 µg
IMMUNOGEN:	Recombinant human Alpha-1-Antitrypsin (AAT) protein fragment
HOST/ISOTYPE:	Mouse IgG1
CLONALITY:	Monoclonal
CLONE:	AAT/1378
MOL WEIGHT:	54 kDa
SPECIES REACTIVITY:	Human
PURIFICATION:	Protein A/G purification
FORM:	Liquid
FORMULATION:	Supplied in 10 mM PBS with 0.05% BSA & 0.05% azide
STORAGE CONDITIONS:	Shipped at 4°C. For long term storage store at -20°C in small aliquots to prevent freeze-thaw cycles
DESCRIPTION:	It recognizes a protein of 54kDa, which is identified antitrypsin (AAT). The immunohistochemical staining of AAT is useful in identification of benign and malignant hepatic tumors and yolk sac carcinomas. Positive staining for AAT is also used in detection of benign and malignant lesions of histiocytic nature. This antibody is may also useful tool in the screening of patients with cryptogenic cirrhosis or other forms of liver disease with fibrosis of uncertain origin.
APPLICATION:	FC: 0.5-1 ug/1X10 ⁶ cells in 0.1 ml IF: 0.5-1 ug/ml WB: 0.5-1 ug/ml IHC (Formalin-fixed) (0.5-1ug/ml for 30 min at Room Temp) (Staining of formalin-fixed tissues requires boiling tissue sections in 10mM citrate buffer, pH 6.0, for 10-20 min followed by cooling at RT for 20 minutes)

Note: This information is only intended as a guide. The optimal dilutions must be determined by the user.



(A) Formalin-fixed, paraffin-embedded human Tonsil stained with Alpha-1-Antitrypsin Monoclonal Antibody (AAT/1378).

(B) Western blot analysis of recombinant Alpha-1-Antitrypsin, Jurkat and A549 cell lysate using Alpha-1-Antitrypsin Antibody (AAT/1378)

RELATED PRODUCTS:

- Anti-ACTH Antibody (SPM501) (Cat. No. A1418)
- Anti-ACTH Antibody (r57) (Cat. No. A1419)
- Anti-Adiponectin Antibody (ADPN/1370) (Cat. No. A1420)
- Anti-Adipophilin Antibody (ADFP/1365) (Cat. No. A1421)
- Anti-Adipophilin Antibody (ADFP/1494) (Cat. No. A1422)
- Anti-AFP Antibody (C3) (Cat. No. A1423)
- Anti-ALDH1A1 Antibody (ALDH1A1/1381) (Cat. No. A1424)
- Anti-ALK Antibody (ALK/1503) (Cat. No. A1425)
- Anti-Alkaline Phosphatase Antibody (ALPL/597) (Cat. No. A1426)

FOR RESEARCH USE ONLY! Not to be used on humans.