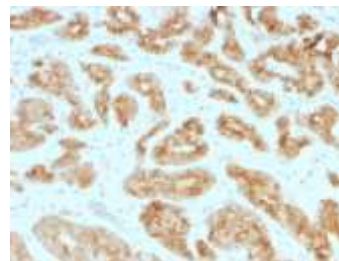


Anti-AMACR / p504S Antibody (AMACR/1723)

CATALOG NO:	A1428-100
ALTERNATIVE NAMES:	Alpha-methylacyl-CoA Racemase, CBAS4, Da1-8, Macr1, RACE, RM
AMOUNT:	100 µg
IMMUNOGEN:	Recombinant human full-length AMACR protein
HOST/ISOTYPE:	Mouse IgG
CLONALITY:	Monoclonal
CLONE:	AMACR/1723
MOL WEIGHT:	54 kDa
SPECIES REACTIVITY:	Human
PURIFICATION:	Protein A/G purified
FORM:	Liquid
FORMULATION:	Supplied in 10 mM PBS with 0.05% BSA & 0.05% azide
STORAGE CONDITIONS:	Shipped at 4°C. For long term storage store at -20°C in small aliquots to prevent freeze-thaw cycles
DESCRIPTION:	This antibody recognizes a protein of 54kDa, which is identified as AMACR, also known as p504S. It is an enzyme that is involved in bile acid biosynthesis and β-oxidation of branched-chain fatty acids. AMACR is essential in lipid metabolism. It is expressed in cells of premalignant high-grade prostatic intraepithelial neoplasia (HGPIN) and prostate adenocarcinoma. The majority of the carcinoma cells show a distinct granular cytoplasmic staining reaction. AMACR is present at low or undetectable levels in glandular epithelial cells of normal prostate and benign prostatic hyperplasia. A spotty granular cytoplasmic staining is seen in a few cells of the benign glands. AMACR is expressed in normal liver (hepatocytes), kidney (tubular epithelial cells) and gall bladder (epithelial cells). Expression has also been found in lung (bronchial epithelial cells) and colon (colonic surface epithelium). AMACR expression can also be found in hepatocellular carcinoma and kidney carcinoma. Past studies have also shown that AMACR is expressed in various colon carcinomas (well, moderately and poorly differentiated) and over expressed in prostate carcinoma.
APPLICATION:	Immunofluorescence (1-2 ug/ml) Immunohistology (Formalin-fixed) (1-2 ug/ml for 30 minutes at RT) (Staining of formalin-fixed tissues requires boiling tissue sections in 10 mM Citrate Buffer, pH 6.0, for 10-20 min followed by cooling at RT for 20 minutes)

Note: This information is only intended as a guide. The optimal dilutions must be determined by the user.



Formalin-fixed, paraffin-embedded human prostate carcinoma stained with AMACR / p504S Monoclonal Antibody

RELATED PRODUCTS:

- Anti-ACTH Antibody (SPM501) **(Cat. No. A1418)**
- Anti-ACTH Antibody (r57) **(Cat. No. A1419)**
- Anti-Adiponectin Antibody (ADPN/1370) **(Cat. No. A1420)**
- Anti-Adipophilin Antibody (ADFP/1365) **(Cat. No. A1421)**
- Anti-Adipophilin Antibody (ADFP/1494) **(Cat. No. A1422)**
- Anti-AFP Antibody (C3) **(Cat. No. A1423)**
- Anti-ALDH1A1 Antibody (ALDH1A1/1381) **(Cat. No. A1424)**
- Anti-ALK Antibody (ALK/1503) **(Cat. No. A1425)**
- Anti-Alkaline Phosphatase Antibody (ALPL/597) **(Cat. No. A1426)**
- Anti-Alpha-1-Antitrypsin Antibody (AAT/1378) **(Cat. No. A1427)**

FOR RESEARCH USE ONLY! Not to be used on humans.