

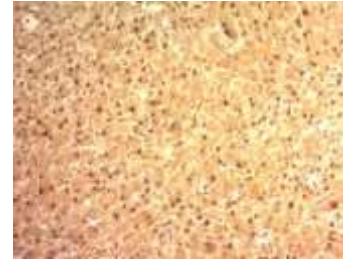
## Anti-Arginase 1 Antibody (ARG1/1125)

<b>CATALOG NO:</b>	A1430-100
<b>ALTERNATIVE NAMES:</b>	Arginase 1, ARG1, liver-type arginase, type I arginase
<b>AMOUNT:</b>	100 µg
<b>IMMUNOGEN:</b>	Recombinant fragment (87 Amino acid residues around aa 1-150) of human ARG1 protein
<b>HOST/ISOTYPE:</b>	Mouse IgG3, kappa
<b>CLONALITY:</b>	Monoclonal
<b>CLONE:</b>	ARG1/1125
<b>MOL WEIGHT:</b>	35-38 kDa
<b>SPECIES REACTIVITY:</b>	Human
<b>PURIFICATION:</b>	Protein A/G purified
<b>FORM:</b>	Liquid
<b>FORMULATION:</b>	Supplied in 10 mM PBS with 0.05% BSA & 0.05% azide
<b>STORAGE CONDITIONS:</b>	Shipped at 4°C. For long term storage store at -20°C in small aliquots to prevent freeze-thaw cycles

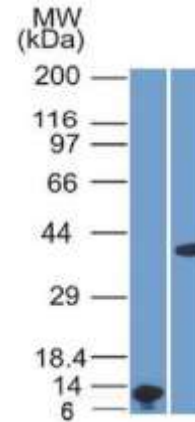
**DESCRIPTION:** Recognizes a protein of 35-38kDa, which is identified as Arginase 1 (ARG1). Arginase is a manganese metallo-enzyme that catalyzes the hydrolysis of arginine to generate ornithine and urea. Arginase I and II are isoenzymes which differ in subcellular localization, regulation, and possibly function. Arginase I is a cytosolic enzyme, which is expressed mainly in the liver as part of the urea cycle, whereas arginase II is a mitochondrial protein found in a variety of tissues. Antibody to ARG-1 labels hepatocytes in normal tissues and granulocytes in peripheral blood. ARG-1 is a sensitive and specific marker for identification of hepatocellular carcinoma.

**APPLICATION:** FC: 0.5-1 µg/1X10<sup>6</sup> cells  
 IF: 1-2 µg/ml  
 WB: 0.5-1 µg/ml  
 IHC (Formalin-fixed): 1-2 µg/ml for 30 minutes at RT  
 (Staining of formalin-fixed tissues requires boiling tissue sections in 10mM citrate buffer, pH 6.0, for 10-20 min followed by cooling at RT for 20 minutes)

**Note:** This information is only intended as a guide. The optimal dilutions must be determined by the user.



Formalin-fixed, paraffin-embedded human hepatocellular carcinoma stained with Arginase 1 Monoclonal Antibody



Western Blot analysis (A) Recombinant ARG1 protein fragment (B) human liver lysate using Arginase 1 Monoclonal Antibody

### RELATED PRODUCTS:

- Anti-ACTH Antibody (SPM501) (Cat. No. A1418)
- Anti-ACTH Antibody (r57) (Cat. No. A1419)
- Anti-Adiponectin Antibody (ADPN/1370) (Cat. No. A1420)
- Anti-Adipophilin Antibody (ADFP/1365) (Cat. No. A1421)
- Anti-Adipophilin Antibody (ADFP/1494) (Cat. No. A1422)
- Anti-AFP Antibody (C3) (Cat. No. A1423)
- Anti-ALDH1A1 Antibody (ALDH1A1/1381) (Cat. No. A1424)
- Anti-ALK Antibody (ALK/1503) (Cat. No. A1425)
- Anti-Alkaline Phosphatase Antibody (ALPL/597) (Cat. No. A1426)
- Anti-Alpha-1-Antitrypsin Antibody (AAT/1378) (Cat. No. A1427)

**FOR RESEARCH USE ONLY! Not to be used on humans.**