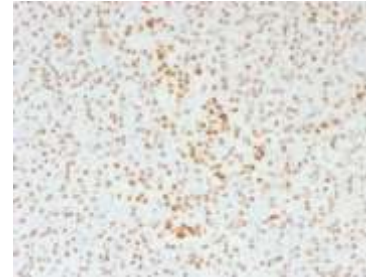


Anti-ATRX / RAD54 Antibody (39f)

CATALOG NO:	A1432-100
ALTERNATIVE NAMES:	Alpha thalassemia/mental retardation syndrome X linked homolog, ATP-dependent helicase ATRX, ATR2, ATRX, DNA-dependent ATPase and helicase, MRXHF1, RAD54; RAD54L, SFM1, SHS, Transcriptional regulator ATRX, X-linked helicase II, X-linked nuclear protein, XH2, XNP, Znf-HX
AMOUNT:	100 µg
IMMUNOGEN:	Recombinant human ATRX protein
HOST/ISOTYPE:	Mouse IgG1, kappa
CLONALITY:	Monoclonal
CLONE:	39f
MOL WEIGHT:	280 kDa
SPECIES REACTIVITY:	Human
PURIFICATION:	Protein A/G purified
FORM:	Liquid
FORMULATION:	Supplied in 10 mM PBS with 0.05% BSA & 0.05% azide
STORAGE CONDITIONS:	Shipped at 4°C. For long term storage store at -20°C in small aliquots to prevent freeze-thaw cycles
DESCRIPTION:	ATRX is a member of the Snf2 family of helicase/ATPases, which contribute to the remodeling of the nucleosome structure in an ATP-dependent manner, and facilitate the initiation of transcription and replication. Structurally, ATRX contains a PHD zinc finger motif. ATRX is regulated throughout the cell cycle where it is differentially distributed within the nucleus. During interphase, ATRX predominately associates with the nuclear matrix, while during mitosis, ATRX localizes with condensed chromatin. At the onset of M phase, phosphorylation rapidly induces this redistribution of ATRX to the short arms of human acrocentric chromosomes, where it then specifically complexes with heterochromatin protein 1 α to mediate chromosomal segregation. Mutations in the ATRX gene correlate with a high incidence of severe X-linked form of syndromal mental retardation associated with α thalassemia or ATRX syndrome.
APPLICATION:	FC: 0.5-1 µg/1X10 ⁶ cells IF: 1-2 µg/ml WB: 0.5-1µg/ml IHC (Formalin-fixed): 0.5-1 µg/ml for 30 minutes at RT

(Staining of formalin-fixed tissues is enhanced by boiling tissue sections in 10mM Tris with 1mM EDTA Buffer, pH 9.0, for 10-20 min followed by cooling at RT for 20 minutes)

Note: This information is only intended as a guide. The optimal dilutions must be determined by the user.



Formalin-fixed, paraffin-embedded human pancreas stained with ATRX Monoclonal Antibody

RELATED PRODUCTS:

- Anti-ACTH Antibody (SPM501) **(Cat. No. A1418)**
- Anti-ACTH Antibody (r57) **(Cat. No. A1419)**
- Anti-Adiponectin Antibody (ADPN/1370) **(Cat. No. A1420)**
- Anti-Adipophilin Antibody (ADFP/1365) **(Cat. No. A1421)**
- Anti-Adipophilin Antibody (ADFP/1494) **(Cat. No. A1422)**
- Anti-AFP Antibody (C3) **(Cat. No. A1423)**
- Anti-ALDH1A1 Antibody (ALDH1A1/1381) **(Cat. No. A1424)**
- Anti-ALK Antibody (ALK/1503) **(Cat. No. A1425)**
- Anti-Alkaline Phosphatase Antibody (ALPL/597) **(Cat. No. A1426)**
- Anti-Alpha-1-Antitrypsin Antibody (AAT/1378) **(Cat. No. A1427)**

FOR RESEARCH USE ONLY! Not to be used on humans.