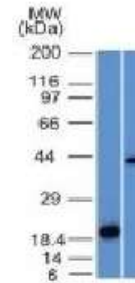


Anti-Aurora B Antibody (AURKB/1521)

CATALOG NO:	A1433-100
ALTERNATIVE NAMES:	AIK2, AIM-1, ARK-2, AurB, AURKB, Aurora-1, Aurora and Ipl1 like midbody associated protein 1, Aurora kinase B, Aurora-B, Aurora-related kinase 2, Aurora/IPL1-related kinase 2, IPL1, Protein phosphatase 1 regulatory subunit 48 (PPP1R48), Serine/threonine-protein kinase 12, Serine/threonine-protein kinase aurora-B, STK1, STK12, STK5
AMOUNT:	100 µg
IMMUNOGEN:	Recombinant human Aurora B protein fragment (aa 89-251)
HOST/ISOTYPE:	Mouse IgG2b
CLONALITY:	Monoclonal
CLONE:	AURKB/1521
MOL WEIGHT:	39 kDa
SPECIES REACTIVITY:	Human
PURIFICATION:	Protein A/G purified
FORM:	Liquid
FORMULATION:	Supplied in 10 mM PBS with 0.05% BSA & 0.05% azide
STORAGE CONDITIONS:	Shipped at 4°C. For long term storage store at -20°C in small aliquots to prevent freeze-thaw cycles
DESCRIPTION:	Recognizes a protein of 39 kDa, which is identified as Aurora B. The serine/threonine protein kinase aurora B (Aurora B) is a chromosomal passenger protein critical for accurate chromosome segregation, cytokinesis, protein localization to the centromere and kinetochore, correct microtubule-kinetochore attachment, and regulation of the mitotic checkpoint. Aurora B forms a tight complex with inner centrosome protein and survivin. Inactivation of any of these proteins causes similar defects in chromosome segregation. A significant overexpression of Aurora B has been found in a variety of human tumors including non-small cell lung carcinoma, astrocytoma, seminoma and carcinomas of the colon, prostate, endometrium and thyroid. The expression level of Aurora B is associated with cell proliferation and prognosis in these tumors.
APPLICATION:	FC: 0.5-1 µg/1X10 ⁶ cells IF: 1-2 µg/ml WB: 0.5-1 µg/ml

Note: This information is only intended as a guide. The optimal dilutions must be determined by the user.



Western Blot Analysis (A) Recombinant Protein (B) Human Liver Lysate using Aurora B Monoclonal Antibody (AURKB/1521).

RELATED PRODUCTS:

- Anti-ACTH Antibody (SPM501) **(Cat. No. A1418)**
- Anti-ACTH Antibody (r57) **(Cat. No. A1419)**
- Anti-Adiponectin Antibody (ADPN/1370) **(Cat. No. A1420)**
- Anti-Adipophilin Antibody (ADFP/1365) **(Cat. No. A1421)**
- Anti-Adipophilin Antibody (ADFP/1494) **(Cat. No. A1422)**
- Anti-AFP Antibody (C3) **(Cat. No. A1423)**
- Anti-ALDH1A1 Antibody (ALDH1A1/1381) **(Cat. No. A1424)**
- Anti-ALK Antibody (ALK/1503) **(Cat. No. A1425)**
- Anti-Alkaline Phosphatase Antibody (ALPL/597) **(Cat. No. A1426)**
- Anti-Alpha-1-Antitrypsin Antibody (AAT/1378) **(Cat. No. A1427)**

FOR RESEARCH USE ONLY! Not to be used on humans.