

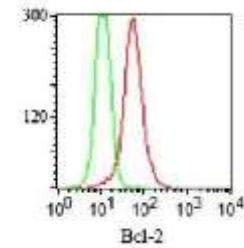
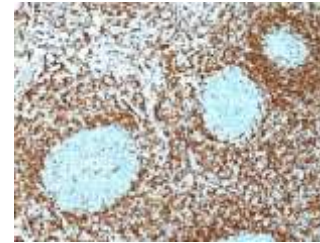
Anti-Bcl-2 Antibody (100/D5 + 124)

CATALOG NO:	A1435-100
ALTERNATIVE NAMES:	Apoptosis regulator Bcl-2, B-cell CLL/lymphoma-2
AMOUNT:	100 µg
IMMUNOGEN:	A synthetic peptide, aa 41-54 (GAAPAGIFSSQPG-Cys) of human Bcl-2
HOST/ISOTYPE:	Mouse IgG's
CLONALITY:	Monoclonal
CLONE:	100/D5 + 124
MOL WEIGHT:	25-26 kDa
SPECIES REACTIVITY:	Human
PURIFICATION:	Protein A/G purified
FORM:	Liquid
FORMULATION:	Supplied in 10 mM PBS with 0.05% BSA & 0.05% azide
STORAGE CONDITIONS:	Shipped at 4°C. For long term storage store at -20°C in small aliquots to prevent freeze-thaw cycles

DESCRIPTION: This antibody recognizes a protein of 25-26 kDa, identified as the bcl-2 α oncoprotein. It shows no cross-reaction with Bcl-x or Bax protein. Expression of bcl-2 α oncoprotein inhibits the programmed cell death (apoptosis). In most follicular lymphomas, neoplastic germinal centers express high levels of bcl-2 α protein, whereas the normal or hyperplastic germinal centers are negative. Consequently, this antibody is valuable when distinguishing between reactive and neoplastic follicular proliferation in lymph node biopsies. It may also be used in distinguishing between those follicular lymphomas that express bcl-2 protein and the small number in which the neoplastic cells are bcl-2 negative.

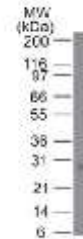
APPLICATION: FC: 0.5-1 µg/1X10⁶ cells
 IF: 0.5-1 µg/ml
 WB: 0.5-1 µg/ml
 IHC: 0.5-1 µg/ml for 30 minutes at RT
 (Staining of formalin-fixed tissues requires boiling tissue sections in 10mM Tris with 1mM EDTA, pH 9.0, for 10-20 min followed by cooling at RT for 20 minutes)

Note: This information is only intended as a guide. The optimal dilutions must be determined by the user.



Formalin-fixed, paraffin-embedded human non-Hodgkin's Lymphoma stained with Bcl-2 Monoclonal Antibody (100/D5 + 124). Note nuclear membrane & cytoplasmic staining Antibody

Intracellular staining of Bcl-2 in Jurkat cells using Bcl-2 monoclonal antibody (red) and isotype control (green)



Western Blot of Bcl-2 in human skin using Bcl-2 Monoclonal Antibody

RELATED PRODUCTS:

- Anti-ACTH Antibody (SPM501) (Cat. No. A1418)
- Anti-ACTH Antibody (r57) (Cat. No. A1419)
- Anti-Adiponectin Antibody (ADPN/1370) (Cat. No. A1420)
- Anti-Adipophilin Antibody (ADFP/1365) (Cat. No. A1421)
- Anti-Adipophilin Antibody (ADFP/1494) (Cat. No. A1422)
- Anti-AFP Antibody (C3) (Cat. No. A1423)
- Anti-ALDH1A1 Antibody (ALDH1A1/1381) (Cat. No. A1424)
- Anti-ALK Antibody (ALK/1503) (Cat. No. A1425)
- Anti-Alkaline Phosphatase Antibody (ALPL/597) (Cat. No. A1426)
- Anti-Alpha-1-Antitrypsin Antibody (AAT/1378) (Cat. No. A1427)

FOR RESEARCH USE ONLY! Not to be used on humans.

