

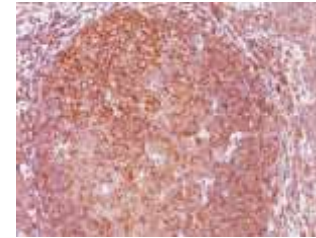
Anti-BCL10 Antibody (BL10/411)

CATALOG NO:	A1439-100
ALTERNATIVE NAMES:	B-cell CLL/lymphoma 10, B-cell leukemia/lymphoma 10, CARD-containing molecule enhancing NF-kappa-B, CARD-like apoptotic protein, caspase-recruiting domain-containing protein, CED-3/ICH-1 prodomain homologous E10-like regulator, Cellular homolog of vCARMEN, Cellular-E10 (cE10), CIPER, hCLAP, mE10, R-RCD1
AMOUNT:	100 µg
IMMUNOGEN:	Human BCL10 recombinant protein (epitope aa122-168)
HOST/ISOTYPE:	Mouse IgG1, kappa
CLONALITY:	Monoclonal
CLONE:	BL10/411
MOL WEIGHT:	33 kDa
SPECIES REACTIVITY:	Human
PURIFICATION:	Protein A/G purified
FORM:	Liquid
FORMULATION:	Supplied in 10 mM PBS with 0.05% BSA & 0.05% azide
STORAGE CONDITIONS:	Shipped at 4°C. For long term storage store at -20°C in small aliquots to prevent freeze-thaw cycles

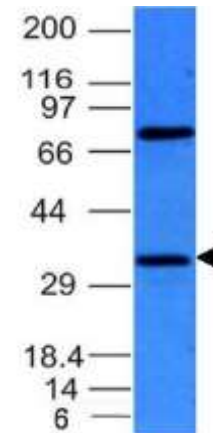
DESCRIPTION: BCL10, with an N-terminal caspase recruitment domain (CARD), is found in a number of apoptotic regulatory molecules. It was identified through its direct involvement in t(1;14) of mucosa-associated lymphoid tissue (MALT) lymphoma. Expression of BCL10 was shown to induce NFκB activation in a NIK-dependent pathway. This MAb labels subpopulations of normal B and T cells and is a useful tool for the sub-classification of lymphomas. In MALT lymphomas with the t(1;14) translocation, while 55% of MALT lymphomas lacking this translocation exhibited the same labeling pattern, although at a much lower level.

APPLICATION: FC: 0.5-1 µg/1X10⁶ cells
IF: 1-2 µg/ml
WB: 0.5-1 µg/ml
IHC: 0.5-1 µg/ml for 30 minutes at RT
(Staining of formalin-fixed tissues requires boiling tissue sections in 10mM citrate buffer, pH 6.0, for 10-20 min followed by cooling at RT for 20 minutes)

Note: This information is only intended as a guide. The optimal dilutions must be determined by the user.



Formalin-fixed, paraffin-embedded human Tonsil stained with BCL10 Monoclonal Antibody (BL10/411)



Western Blot analysis of HepG2 cell lysate using BCL10 Monoclonal Antibody

RELATED PRODUCTS:

- Anti-Bcl-2 Antibody (100/D5 + 124) (Cat. No. A1435)
- Anti-Bcl-6 Antibody (BCL6/1475) (Cat. No. A1436)
- Anti-Bcl-6 Antibody (BCL6/1527) (Cat. No. A1437)
- Anti-Bax Antibody (BAX/962) (Cat. No. A1434)
- Anti-Adipophilin Antibody (ADFP/1494) (Cat. No. A1422)
- Anti-AFP Antibody (C3) (Cat. No. A1423)
- Anti-ALDH1A1 Antibody (ALDH1A1/1381) (Cat. No. A1424)
- Anti-ALK Antibody (ALK/1503) (Cat. No. A1425)
- Anti-Alkaline Phosphatase Antibody (ALPL/597) (Cat. No. A1426)
- Anti-Alpha-1-Antitrypsin Antibody (AAT/1378) (Cat. No. A1427)

FOR RESEARCH USE ONLY! Not to be used on humans.