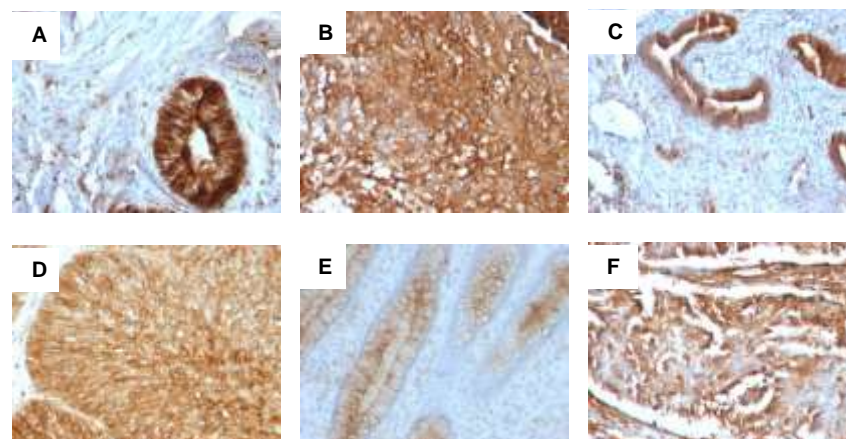


Anti-Beta-2 Microglobulin Antibody (B2M/961)

CATALOG NO:	A1440-100
ALTERNATIVE NAMES:	B2M, Beta 2 microglobin, Beta chain of MHC class I molecules, Beta-2-microglobulin form pl 5.3, Hdcma22p
AMOUNT:	100 µg
IMMUNOGEN:	Full length recombinant human B2M protein
HOST/ISOTYPE:	Mouse IgG2b, kappa
CLONALITY:	Monoclonal
CLONE:	B2M/961
MOL WEIGHT:	12 kDa
SPECIES REACTIVITY:	Human
PURIFICATION:	Protein A/G purified
FORM:	Liquid
FORMULATION:	Supplied in 10 mM PBS with 0.05% BSA & 0.05% azide
STORAGE CONDITIONS:	Shipped at 4°C. For long term storage store at -20°C in small aliquots to prevent freeze-thaw cycles
DESCRIPTION:	Recognizes a protein of 12 kDa, identified as β -2 microglobulin. Major histocompatibility complex (MHC) class 1 molecules bind to antigens for presentation on the surface of cells. The proteasome is responsible for producing these antigens from the components of foreign pathogens. MHC class 1 molecules consist of an α heavy chain that contains three subdomains (α 1, α 2, α 3) and a non-covalent associating light chain, known as β -2-Microglobulin. β -2-Microglobulin associates with the α 3 subdomain of the α heavy chain and forms an immunoglobulin domain-like structure that mediates proper folding and expression of MHC class 1 molecules. The α 1 and α 2 domains of the α heavy chain form the peptide antigen-binding cleft. Mutations in the β -2-Microglobulin gene can enhance the progression of malignant melanoma phenotypes.
APPLICATION:	FC: 0.5-1 µg/1X10 ⁶ cells IF: 0.5-1 µg/ml IHC: 0.5-1 µg/ml for 30 minutes at RT (Staining of formalin-fixed tissues requires boiling tissue sections in 10 mM citrate buffer, pH 6.0, for 10-20 min followed by cooling at RT for 20 minutes)

Note: This information is only intended as a guide. The optimal dilutions must be determined by the user.



Formalin-fixed, paraffin-embedded human samples stained with Beta-2 Microglobulin Monoclonal Antibody (B2M/961):

- A) Human cervical carcinoma
- B) Human melanoma
- C) Human endometrial carcinoma
- D) Human bladder carcinoma
- E) Human colon carcinoma
- F) Human renal carcinoma

RELATED PRODUCTS:

- Anti-Bcl-2 Antibody (100/D5 + 124) (Cat. No. A1435)
- Anti-Bcl-6 Antibody (BCL6/1475) (Cat. No. A1436)
- Anti-Bcl-6 Antibody (BCL6/1527) (Cat. No. A1437)
- Anti-Bax Antibody (BAX/962) (Cat. No. A1434)
- Anti-Adipophilin Antibody (ADFP/1494) (Cat. No. A1422)
- Anti-AFP Antibody (C3) (Cat. No. A1423)
- Anti-ALDH1A1 Antibody (ALDH1A1/1381) (Cat. No. A1424)
- Anti-ALK Antibody (ALK/1503) (Cat. No. A1425)
- Anti-Alkaline Phosphatase Antibody (ALPL/597) (Cat. No. A1426)
- Anti-Alpha-1-Antitrypsin Antibody (AAT/1378) (Cat. No. A1427)

FOR RESEARCH USE ONLY! Not to be used on humans.