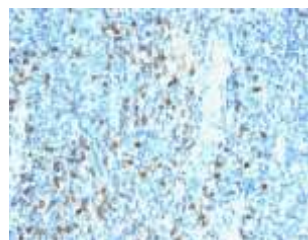


Anti-Biotin Antibody (Hyb-8)

CATALOG NO:	A1441-100
ALTERNATIVE NAMES:	Vitamin B7, Vitamin H
AMOUNT:	100 µg
IMMUNOGEN:	Biotinylated sheep immunoglobulin
HOST/ISOTYPE:	Mouse IgG1
CLONALITY:	Monoclonal
CLONE:	Hyb-8
MOL WEIGHT:	244 kDa
SPECIES REACTIVITY:	All species
PURIFICATION:	Protein A/G purified
FORM:	Liquid
FORMULATION:	Supplied in 10 mM PBS with 0.05% BSA & 0.05% azide
STORAGE CONDITIONS:	Shipped at 4°C. For long term storage store at -20°C in small aliquots to prevent freeze-thaw cycles
DESCRIPTION:	It recognizes both the free and protein-conjugated (either soluble or cell bound) form of biotin. This MAb is highly specific to biotin and shows no cross-reaction with other structurally related compounds. It has a very high affinity for biotin and is excellent for use in various amplification techniques. In some applications, localization of biotinylated probes with avidin produces unacceptably high background staining. Anti-biotin antibody may be substituted to decrease this noise.
APPLICATION:	Confocal Microscopy FC: 0.5-1 µg/1X10 ⁶ cells IF: 1-2 µg/ml WB IHC: 0.5-1 µg/ml for 30 minutes at RT In situ Nucleic Acid Hybridization

Note: This information is only intended as a guide. The optimal dilutions must be determined by the user.



Formalin-fixed, paraffin-embedded human Tonsil stained with biotinylated Lambda Light Chain probe followed by anti-biotin Monoclonal Antibody

RELATED PRODUCTS:

- Anti-Bcl-2 Antibody (100/D5 + 124) (Cat. No. A1435)
- Anti-Bcl-6 Antibody (BCL6/1475) (Cat. No. A1436)
- Anti-Bcl-6 Antibody (BCL6/1527) (Cat. No. A1437)
- Anti-Bax Antibody (BAX/962) (Cat. No. A1434)
- Anti-Adipophilin Antibody (ADFP/1494) (Cat. No. A1422)
- Anti-AFP Antibody (C3) (Cat. No. A1423)
- Anti-ALDH1A1 Antibody (ALDH1A1/1381) (Cat. No. A1424)
- Anti-ALK Antibody (ALK/1503) (Cat. No. A1425)
- Anti-Alkaline Phosphatase Antibody (ALPL/597) (Cat. No. A1426)
- Anti-Alpha-1-Antitrypsin Antibody (AAT/1378) (Cat. No. A1427)

FOR RESEARCH USE ONLY! Not to be used on humans.