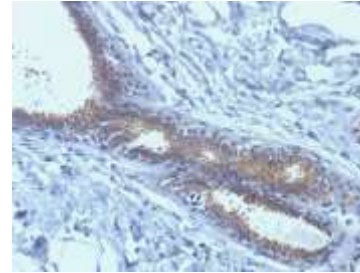


Anti-BRCA1 Antibody (BRCA1/1398)

CATALOG NO:	A1448-100
ALTERNATIVE NAMES:	BRCA1, Breast and ovarian cancer susceptibility protein 1, Breast Cancer 1 Early Onset, Breast cancer type 1 susceptibility protein, BROVCA1, IRIS, PNCA4, PPP1R53, Protein phosphatase 1 regulatory subunit 53, PSCP, RING finger protein 53, RNF53
AMOUNT:	100 µg
IMMUNOGEN:	Recombinant human BRCA1 protein fragment (aa445-620)
HOST/ISOTYPE:	Mouse IgG1, kappa
CLONALITY:	Monoclonal
CLONE:	BRCA1/1398
MOL WEIGHT:	220 kDa
SPECIES REACTIVITY:	Human
PURIFICATION:	Protein A/G purified
FORM:	Liquid
FORMULATION:	Supplied in 10 mM PBS with 0.05% BSA & 0.05% azide
STORAGE CONDITIONS:	Shipped at 4°C. For long term storage store at -20°C in small aliquots to prevent freeze-thaw cycles
DESCRIPTION:	This gene encodes a nuclear phosphoprotein that plays a role in maintaining genomic stability, and it also acts as a tumor suppressor. The encoded protein combines with other tumor suppressors, DNA damage sensors, and signal transducers to form a large multi-subunit protein complex known as the BRCA1-associated genome surveillance complex (BASC). This gene product associates with RNA polymerase II, and through the C-terminal domain, also interacts with histone deacetylase complexes. This protein thus plays a role in transcription, DNA repair of double-stranded breaks, and recombination. Mutations in this gene are responsible for approximately 40% of inherited breast cancers and more than 80% of inherited breast and ovarian cancers. Alternative splicing plays a role in modulating the subcellular localization and physiological function of this gene.
APPLICATION:	FC: 0.5-1 µg/1X10 ⁶ cells IF: 1-2 µg/ml IHC: 5-10 µg/ml for 60 minutes at RT (Staining of formalin-fixed tissues requires boiling tissue sections in 10mM citrate buffer, pH 6.0, for 10-20 min followed by cooling at RT for 20 minutes)

Note: This information is only intended as a guide. The optimal dilutions must be determined by the user.



Formalin-fixed, paraffin-embedded human Breast Carcinoma stained with BRCA1 Monoclonal Antibody (BRCA1/1398)

RELATED PRODUCTS:

- Anti-Bcl-2 Antibody (100/D5 + 124) (Cat. No. A1435)
- Anti-Bcl-6 Antibody (BCL6/1475) (Cat. No. A1436)
- Anti-Bcl-6 Antibody (BCL6/1527) (Cat. No. A1437)
- Anti-Bax Antibody (BAX/962) (Cat. No. A1434)
- Anti-Adipophilin Antibody (ADFP/1494) (Cat. No. A1422)
- Anti-AFP Antibody (C3) (Cat. No. A1423)
- Anti-ALDH1A1 Antibody (ALDH1A1/1381) (Cat. No. A1424)
- Anti-ALK Antibody (ALK/1503) (Cat. No. A1425)
- Anti-Alkaline Phosphatase Antibody (ALPL/597) (Cat. No. A1426)
- Anti-Alpha-1-Antitrypsin Antibody (AAT/1378) (Cat. No. A1427)

FOR RESEARCH USE ONLY! Not to be used on humans.