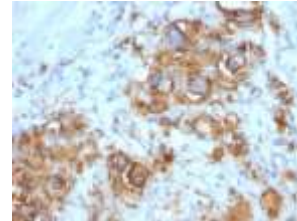


## Anti-CA19-9 Antibody (121SLE)

<b>CATALOG NO:</b>	A1451-100
<b>ALTERNATIVE NAMES:</b>	CA19.9, Ovarian tumor antigen, Pancreatic tumor antigen, Sialyl Lewisia
<b>AMOUNT:</b>	100 µg
<b>IMMUNOGEN:</b>	Precipitin lines obtained after immuno-diffusion using MAbs 116-NS-19-9 and mucins isolated from an ovarian cyst of a Lewis A+B-patient
<b>HOST/ISOTYPE:</b>	Mouse IgM, kappa
<b>CLONALITY:</b>	Monoclonal
<b>CLONE:</b>	121SLE
<b>MOL WEIGHT:</b>	>400 kDa
<b>SPECIES REACTIVITY:</b>	Human
<b>PURIFICATION:</b>	Protein A/G purified
<b>FORM:</b>	Liquid
<b>FORMULATION:</b>	Supplied in 10 mM PBS with 0.05% BSA & 0.05% azide
<b>STORAGE CONDITIONS:</b>	Shipped at 4°C. For long term storage store at -20°C in small aliquots to prevent freeze-thaw cycles
<b>DESCRIPTION:</b>	CA19-9, a carbohydrate epitope expressed on a high MW (>400 kDa) mucin glycoprotein, is a sialyl Lewisia structure which is synthesized from type 1 blood group precursor chains and is present in individuals expressing the Lewisia and/or Lewisb blood group antigens. In normal tissues, sialyl Lewisia antigen is present in ductal epithelium of the breast, kidney, salivary gland, and sweat glands. Its expression is greatly enhanced in serum as well as in the majority of tumor cells in gastrointestinal (GI) carcinomas, including adenocarcinomas of the stomach, intestine, and pancreas. Preoperative elevated CA19-9 levels in patients with stage I pancreatic carcinoma decrease to normal values following surgery. When used serially, CA19-9 can predict recurrence of disease prior to radiographic or clinical findings. This MAbs is excellent for staining of formalin-fixed, paraffin-embedded tissues.
<b>APPLICATION:</b>	FC: 0.5-1 µg/1X10 <sup>6</sup> cells IF: 0.5-1 µg/ml IHC: 0.5-1 µg/ml for 30 minutes at RT (Staining of formalin-fixed tissues requires boiling tissue sections in 10mM citrate buffer, pH 6.0, for 10-20 min followed by cooling at RT for 20 minutes)

**Note: This information is only intended as a guide. The optimal dilutions must be determined by the user.**



**Formalin-paraffin human Gastric Carcinoma stained with CA19-9 monoclonal antibody**

### RELATED PRODUCTS:

- Anti-Bcl-2 Antibody (100/D5 + 124) (Cat. No. A1435)
- Anti-Bcl-6 Antibody (BCL6/1475) (Cat. No. A1436)
- Anti-Bcl-6 Antibody (BCL6/1527) (Cat. No. A1437)
- Anti-Bax Antibody (BAX/962) (Cat. No. A1434)
- Anti-Adipophilin Antibody (ADFP/1494) (Cat. No. A1422)
- Anti-AFP Antibody (C3) (Cat. No. A1423)
- Anti-ALDH1A1 Antibody (ALDH1A1/1381) (Cat. No. A1424)
- Anti-ALK Antibody (ALK/1503) (Cat. No. A1425)
- Anti-Alkaline Phosphatase Antibody (ALPL/597) (Cat. No. A1426)
- Anti-Alpha-1-Antitrypsin Antibody (AAT/1378) (Cat. No. A1427)

**FOR RESEARCH USE ONLY! Not to be used on humans.**